

File Edition

Environment Department of Higashiosaka City

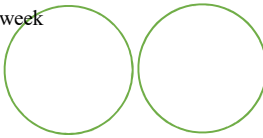
How to Separate and Dispose of Garbage

Garbage collection day in your area

Household Garbage

Twice a week

Every



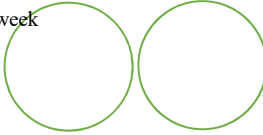
of the week

Place the garbage at designated site by 9am

Cans and Bottles

Twice a week

The



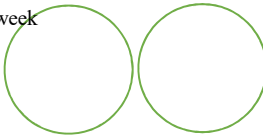
Wed.

Place the garbage at designated site by 9am

Unburnable small item

Twice a week

The



Wed.

Place the garbage at designated site by 1pm

Recyclable Garbage Collection

Plastic containers and packages

Once a week

The



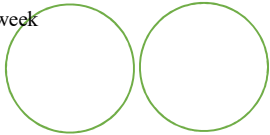
of the week

Place the garbage at designated site by 9am

PET Bottles

Twice a week

The



Wed.

Place the garbage at designated site by 9am

Appointment for large-sized waste collection

Call center

072-962-5374

Online appointment is also available. (See P.10)

Appointment is necessary to bring garbage directly into incineration plant. (See P.11)

Higashiosaka Toshi Seiso Shisetsu Kumiai

For appointment

072-975-5341

“The first Wednesday” refers to the Wednesday that comes first in the month.

Caution! There is no garbage collection on the 5th Wednesday.

Register now! to the Higashiosaka city's official LINE account



Search function of garbage separation

You can find how to separate garbage by entering garbage type.

- Please fill in the collection day in your area in the circles above by checking the list on the P. 17-20.
- Garbage is collected even if the collection day falls on holiday.
- Please keep this guide in a safe place as it is a file edition which is not issued every year.



P.1
Basic rules
Offices in charge

P.2
Household garbage

P.3
Cans and bottles

P.4
Unburnable small items

P.5-P.6
Plastic containers and packages

P.7
PET bottles
Residues due to fire

P.8
Items subject to “Home appliance recycling law”

P.9-P.10
Large-sized waste

P.10
Dead animals such as cats & dogs

P.11
Commercial waste/waste by relocation/ occasional waste/ waste not collected by the city

P.12
Waste papers

P.13
Waste small home appliances and Home PC

P.14
Mercury products

P.15
Small rechargeable batteries

P.16
Fureai collection/home medical care waste

P.17-P.20
Garbage collection schedule list by area

P.21-P.22
List of designated collection site and cooperative stores

Basic rule for disposing garbage

- ① Place the garbage by **9am** on the collection day. (By 1pm for unburnable small items)
- ② Place the garbage at the **designated site** in your area.
- ③ Place the garbage in a **colorless transparent or semi-transparent** plastic bag of 45L in size.
- ④ **Tie the garbage bag closed** and put an appropriate quantity of garbage so that the bag **won't tear** when lifted.

● If you don't follow the rule...

If the garbage is placed on a previous day or late at night, it may be blown away by wind or scavenged by crows.

- Please refer to the **rule by garbage type** (in each page before disposing
- For waste generated from business activities, please refer to P. 11.)



Administrative office

- Household garbage
- Cans and bottles
- Unburnable small items
- Dead animals such as dogs and cats

- Plastic containers and packages
- PET bottles

About collection

- Tobu Kankyo Jigyosho 072-984-8005**
- Chubu Kankyo Jigyosho 072-963-3210**
- Seibu Kankyo Jigyosho 06-6722-2994**
- Hokubu Kankyo Jigyosho 06-6789-1851**

Please refer to P. 17-20 for the office in charge of your area.

About collection

Chubu Kankyo Jigyosho 072-963-3210

About recyclable garbage collection sites

Hokubu Kankyo Jigyosho 06-6789-1851

- Please note that the collection time may delay due to bad weather or when a typhoon is approaching.
- Collection during year-end or New Year's period is announced on the city's news bulletin.

! Dispose of electronic devices separately to prevent fire.

Disposing of dry cell batteries, mobile batteries, home appliances, cell phones, and other electronic devices with household garbage causes fire in collection trucks and incineration plants. Please follow a rule when disposing.

For details, please refer to "Unburnable small items (P.4)" "Small home appliances (P.13)" "Mercury products (P. 14)" and "Small rechargeable batteries. (P. 15)"

! Do not use unlicensed collectors to dispose of large-sized garbage or home appliance.

To collect general waste, a general waste collection and transportation permit is required from the municipality.

"Unlicensed collectors" refers to those who collect waste without such a permit or without being entrusted by the municipality.

HOUSEHOLD GARBAGE (BURNABLE)

Twice a week

Collection day **Monday and Thursday** or **Tuesday and Friday**

Please refer to P. 17- P. 20

Where to dispose **At designated site**

Household garbage

Specific rules to dispose of household garbage

- Drain kitchen garbage well before disposing.
- Sharp-pointed materials such as bamboo skewers must be wrapped in thick paper.
- Food oil should be soaked up by paper or cloth, or harden before throwing away.



Items that can be disposed

Kitchen garbage

(Kitchen waste including leftover)



Drain kitchen garbage well!

Leather goods



Shoes, belts, wallets, etc.

Plastics and vinyl goods



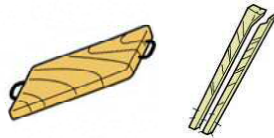
Toys, tooth brushes, sponges, CDs, video tapes, buckets, etc.

Kitchen garbage (Waste oil)



Food oil should be soaked up by paper or cloth, or harden before throwing away!

Wooden goods



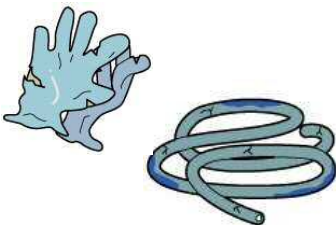
Sharp-pointed materials such as bamboo skewers must be wrapped in thick paper!

Trimmed or fallen leaves



Up to 2 plastic bags can be disposed on the latter collection day of the week.

Rubber goods



Rubber gloves, etc.

Diapers



Remove the filth from paper diapers before disposing.

Others



Waste newspapers, magazines, cardboards and cloths, etc. **can be recycled**. Please refer to P. 12 for details.

In case of disposing as household garbage, put them in a plastic bag of 45L in size.

Do not dispose!

● Trimmed branches



Thick branches, trees, etc., that have been generated when trimmed garden trees

Dispose them as "Large-sized waste." (See P. 9)

In case of large volume, dispose them as "Occasional waste." (P. 11)

Only trimmed branches up to 50 cm in length and 10 cm in diameter can be disposed as household garbage.

CANS AND BOTTLES

Twice a month

Collection day

Area where household garbage is collected on Mon. & Thu: The 1st and 3rd Wednesday
 Area where household garbage is collected on Tue. & Fri: The 2nd and 4th Wednesday

Please refer to P. 17- P. 20

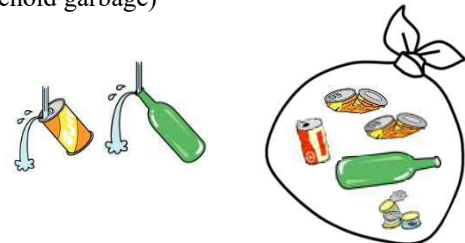
*** There is no garbage collection on the 5th Wednesday of the month.**

Where to dispose

At designated site (The same site as for household garbage)

Specific rules to dispose of cans and bottles

- Remove the contents and slightly rinse the cans and bottles.
- In case of spray cans, make sure to use it up before disposing.
- Bottles, cans and spray cans can be placed in the same plastic bag.



Items that can be disposed as cans and bottles

Cans

Steel cans, aluminum cans, confectionary cans, Cans for snacks, fruits and formula, etc.



Cans up to 9 liters or less in size are subject to collection.

Aluminum cans are collected in groups in some area. (See P. 12)

Bottles

Glass bottles for drinks, foods and seasonings, etc.
 Opalescent glass for cosmetics, etc.



Remove caps!

Returnable bottles are collected in groups in some area. (See P. 12) If they are not collected in your area, please return them to liquor stores.

Spray cans

Gas cylinders, insecticide spray, hairspray, etc.



Remained gas causes fires on garbage collection trucks.

Make sure to use it up before disposing!

- It is not necessary to punch a hole if used it up.
- When you cannot use it up, please contact the administrative office in charge of your area. (P. 17- P. 20)



Do not dispose!



- Heat-resistant glasses, cups and ceramics
- Glass ornaments and flat glasses
- Broken glass bottles
- Chemical bottles for insecticide, etc.

Dispose these items as "Unburnable small items." (P.4)

UNBURNABLE SMALL ITEMS

Twice a month

Collection day

Area where household garbage is collected on Mon. & Thu: The 2nd and 4th Wed.
Area where household garbage is collected on Tue. & Fri: The 1st and 3rd Wed.

Where to dispose

* **There is no garbage collection on the 5th Wed. of the month.**

At designated site (The same site as for household garbage)

Please refer to P. 17- P. 20

Specific rules to dispose of cans and bottles

- Place the garbage by 1 pm.
- Please paste a piece of paper with a word “不燃の小物” (*Funen no komono*) written on it.
- Items that stuck out from the plastic bag are not collected. Dispose them as large-sized garbage.
- Items that are not in a plastic bag or bags that are not tied firmly are not collected.
- Knives and broken items must be wrapped in thick papers with a word “危険 (*Kiken*)” written on it.
- Lighters must be placed in a separate plastic bag with a word “危険 (*Kiken*)” written on it.



Small unburnable items

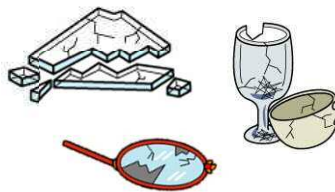
Items that can be disposed as unburnable small items

Metals



Cooking wares (Pans, etc.)
Items with metals (Wire hangers, etc.)

Glasses



Glass wares (Glass plates, etc.)
Piece of glasses (Broken cups, etc.)

Ceramics



Table wares (Plates and bowls, etc.)
Ceramics (flower vase, etc.)

Umbrellas



Umbrellas are collected as unburnable items. It is not necessary to put in a plastic bag. Paste a piece of paper with a word “不燃の小物” (*Funen no komono*) written on it.

Small electric appliances



Toasters, electric pots, rice cookers
Some of the used small electric appliance can be recycled.
Please refer to the P. 13.

Others

Knives (Kitchen knife, scissors, etc.)
Tools (Drivers, etc.)



Please use lighters up!
Knives must be wrapped in a thick papers with a word “危険 (*Kiken*)” written on it.

!

Do not dispose!

!

- Items that cannot fit in a plastic bag of 45 liters in size.

-----> Dispose them as large-sized waste (P. 9)

- Small plastic items
Toys, video tapes and buckets, etc.

-----> Dispose them as household garbage. (P. 2)

- Batteries for electric bicycles

-----> Dispose them to the collection box of small rechargeable batteries or contact bicycle stores. (P. 15)⁴

PLASTIC CONTAINERS AND PACKAGES

Once a week

Collection day Please see the Garbage Collection Schedule by area (P. 17~P. 20.)


Where to dispose **Designated site for recyclable garbage**

*In case of housing complex, please contact management company, etc.

*Individual collection is not available.

Plastic containers & packages

Rule for disposing of plastic containers and packages

① **Make sure to check the mark.** 



② **Empty the contents and slightly rinse or wipe off the stains.**

Please dispose after rinsing or wiping stains off. *It is not necessary to clean thoroughly. (No detergent necessary)

Stained items cannot be recycled. If it is difficult to remove the stain, **please dispose them as household garbage. (P. 2)**

③ **Dispose the garbage in a plastic bag of 45L in size.**

Do not put them in doubled bag to smoothly separate and eliminate obstacles for recycling.

Items that can be disposed

Find this mark



Cups and packages



Containers and packages for instant noodles, box lunch and foods

Plastic bags and wrappings



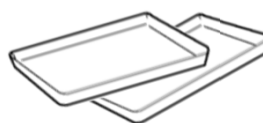
Bags for snacks and shampoo refills
Plastic bags of supermarkets and films

Bottles (Except PET bottles)



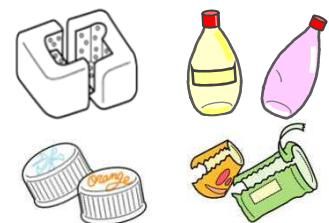
Containers for shampoo and detergent, etc.

Trays



Food trays and compartmented trays

Others



Styrofoam, tubes, caps and labels of PET bottles



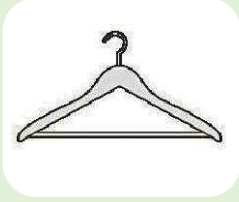
Do not dispose!



No plastic mark is on the items

Items described below must be disposed as **household garbage!**

Plastic product itself



Hangers



Buckets/Bowls

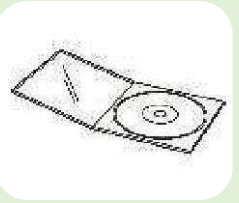


Spoons/Forks

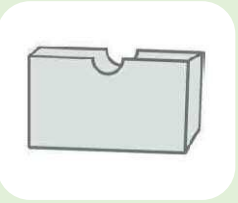


Plastic containers & packages

Items other than containers and wrapping



CD cases



Video tape cases



Glass cases



Items that might be considered mistakenly as plastic containers and packages



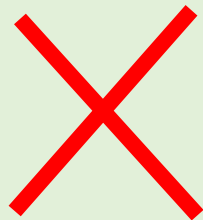
Packing strings



Cable ties



Straws for drinks



Recycling flow of waste plastic containers and PET bottles

- 1**
Separate
- 2**
Collect
- 3**
Compress and pack
- 4**
Recycle
- 5**
New products

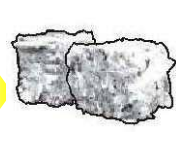
Plastic containers



Separate the garbage and recyclable waste and dispose them on a designated date



Collect the disposed recyclable waste and deliver to the warehouse



Deliver to the recycling plant after removing foreign substances, compressing and packaging



Process the resources into recyclable raw materials and ship



Become a product to be distributed in a market

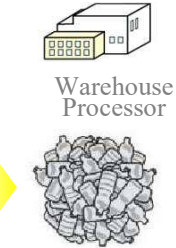
PET bottles



Household in the city



Garbage trucks



Warehouse Processor



Recycling plant



PET Pellet



Household, retailers and companies

PET BOTTLES

Twice a month

Collection day

Area where **household garbage is collected on Mon. & Thu. 2nd & 4th Wed.** of each month
 Area where **household garbage is collected on Tue. & Fri. ... 1st & 3rd Wed.** of each month

Please see P. 17-20

***There is no garbage collection on the 5th Wednesday of each month.**

*Special summer collection, if any, will be announced via city's news bulletin or other media.

Where to dispose

Designated site for recyclable garbage

*In case of housing complex, please contact management company, etc.

*Individual collection is not available.

Rule for disposing of PET bottles

PET bottles & Fire garbage

● Remove caps and labels.

Removed caps and labels can be disposed as "Plastic containers and packages." (P. 5)

● If stained, rinse slightly the bottle.

*If it is difficult to remove the stain, please dispose them as household garbage.



Items that can be disposed

Find this mark



PET bottles for drinks



PET bottles for seasoning and alcohol



Residues due to Fire

The city does not collect residues caused by fire. Also, some of the residues cannot be incinerated at the incineration plant.

Q: How can I distinguish the fire residues that can be incinerated or not?

A: Staff from Higashiosaka Seiso Jigyo Kyodo Kumiai check the residues at the site and inform if they can be brought into the plant.

Contact: Higashiosaka Seiso Jigyo Kyodo Kumiai (Kanri-ka) TEL: 072-962-6021

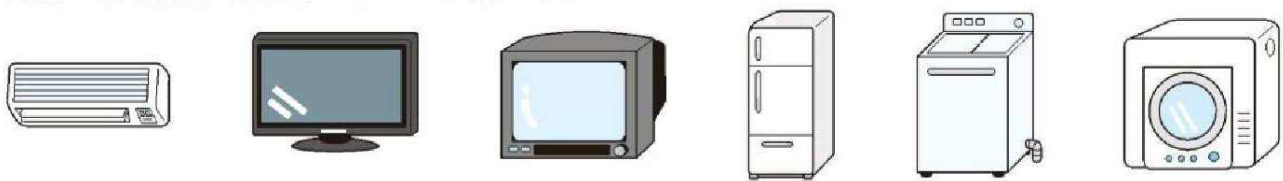
Q: Where can I ask for incineration of the fire residues that cannot be accepted in the plant mentioned above?

A: Ask the contractor handling industrial waste to dispose the residues through the contractor who disassembled the burnt down house, etc.

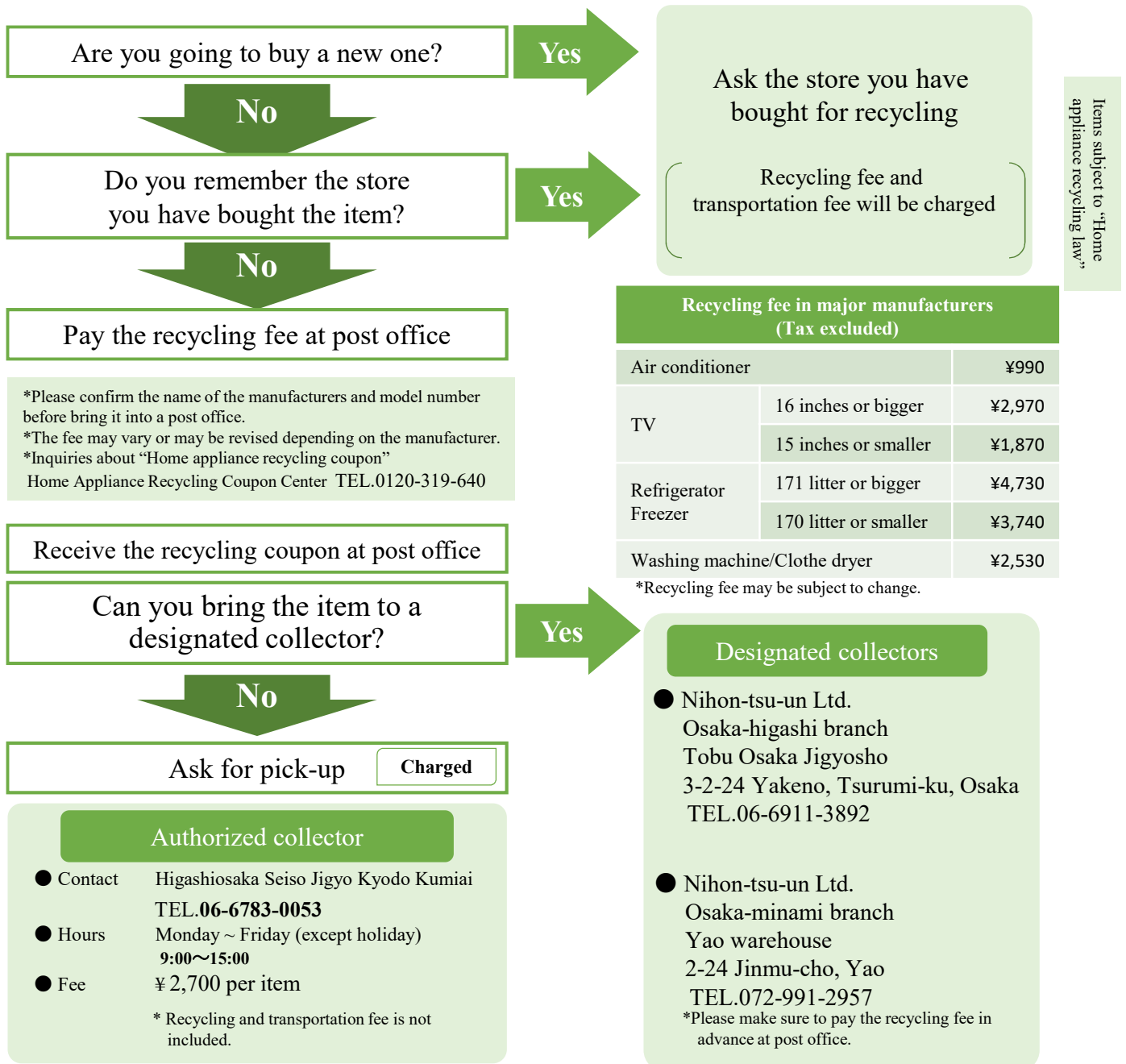
ITEMS SUBJECT TO "HOME APPLIANCE RECYCLING LAW"

Charged

- Air conditioner
(Separate type including wall/floor model and window type)
- TV
(CRT, LC and Plasma TV)
- Refrigerator
- Washing machine
(Automatic, twin tub type and washer/dryer)
- Freezer
- Clothes dryer



The city does not collect items described above. Please see the chart below.



Home Appliance Recycling Law is;

a law to reduce wastes and effectively utilize resources by recycling home appliances discarded from households and offices.

LARGE-SIZED WASTE

Appointment required
(Charged)

Large-sized waste is;

the waste of which the longest side or diameter is 30cm or longer such as furniture including chest or sofa, and electric appliances such as microwave.

How to make an appointment for collection

1

Measure the size of the waste you want to dispose

*Size= Total outside dimensions (width, depth and height)

*Up to 10 items per appointment are accepted. (Following appointment can be made after the last wastes are collected)

Before you call

2

Make an appointment by phone

Call center: **072-962-5374**

*Appointment can be made from 9am to 5pm between Sunday and Friday including holiday. (except year-end and New Year holiday)

Call



The operator will confirm;

1. Your phone number, name and address
2. Whether you live in a detached house or an apartment
3. Whether a collection truck can stop on the side of your residence
4. Type, size and number of garbage

The operator provides;

1. Collection date
2. Registration number
3. Amount of fee
4. Where to place the waste

3

Purchase a ticket at a designated store in the city

*Tickets are available in the post offices and convenience stores in the city. (Family mart, Mini-stop, Lawson and Seven-Eleven)

* No refund is available.

*Tickets have no expiry date but please purchase the necessary quantity of ticket.



Purchase

4

Place the garbage by 9am at the designated place on the collection day.

* Write the collection date and registration number on the ticket and paste it on the waste.

* Please be careful so that the ticket can not be taken off once pasted.

* Place the waste at a safe point to avoid blocking the transit of pedestrians or vehicles.

Dispose

At the time of waste collection

- Your presence at the collection site is not necessary.
- Please note that burnable and unburnable waste may be collected separately at different time.
- Collection date may be altered due to snow or typhoon, etc.
- Only registered items are collected.

Note

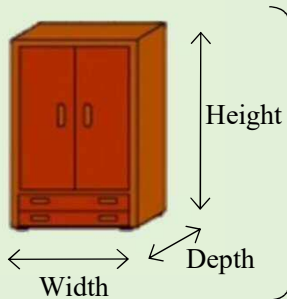
- Change or cancellation of appointment is accepted until 3 days prior to the collection date. (Except Sat, and Sun.)
- Appointment by fax **072-962-1673** is available for the hearing impaired.
- Waste can be brought directly to the incineration plant (Appointment required) Please refer to P. 11. 9

LARGE-SIZED WASTE

Appointment required
(Charged)

Collection fee

- Large-size waste collection became paid service from August 1, 2018.
- The fee varies depending on the waste size.



Total 3 dimensions of the items is

	Collection fee	Number of ticket required
Less than 3 meters	¥400	1 ticket
Over 3 meters	¥800	2 tickets ※

*There is only one type of ticket (¥400 worth)

- In principle, fee is charged for each item, however, bedding items such as futons are counted as 1 item when up to 5 items are bundled. *Please ask details when making an appointment by phone.

Online appointment

- Online appointment is available for those who have made appointment after February 2018 and there is no change in address.

*Online appointment is available for 24 hours throughout the year.

* Please access to the site from city's website or by scanning the QR code on the right.



Large-sized waste
Dead animals

DEAD ANIMALS SUCH AS CATS AND DOGS

Appointment by
phone or bring-
in individually

Appointment by phone

- **Fee (per animal)**
Dead pet cats and dogs • • • ¥2,000
Dead stray cats and dogs, etc. • • Free of charge

If you find a dead cat or dog on a street, please contact below.

- **Contact**
Please refer to P. 17~20 for the office in charge of your area.

Tobu Kankyo Jigyosho 072-984-8005
Chubu Kankyo Jigyosho 072-963-3210
Seibu Kankyo Jigyosho 06-6722-2994
Hokubu Kankyo Jigyosho 06-6789-1851

Depending on the time of appointment, collection on the same day may not be possible.

*In case of Saturday, Sunday, please call;

06-4309-3330

(Pet cats and dogs are not accepted.)

Bring-in

- **Fee (per animal)**
Dead pet cats and dogs • • • ¥1,000
Dead stray cats and dogs, etc. • Free of charge
- **Where to bring in**
Higashiosaka Union of City Cleaning Facilities
(Higashiosaka Toshi Seiso Shisetsu Kuniai)
Address: 4-6-25 Mizuhai, Higashiosaka
TEL: 072-962-6021
- **Available date and hours for bring-in**
Weekdays (Mon.~Fri.) 12:45~15:30
Holiday (Mon.~Sat.) 09:30~11:30/12:45~15:30



*Appointment at city hall (kankyo Jigyo-ka) is not available.

COMMERCIAL / OCCASIONAL WASTE / WASTE BY RELOCATION

Charged

Commercial waste

- Waste generated from business activities in stores, business establishments or factories

*In case of shops with habitable spaces, waste from other than habitable spaces are considered as commercial waste.

Waste by relocation / Occasional waste

- Waste generated from relocation
- Waste generated from community events such as Bon dance or festivals
- Occasional and large volume waste by trimming trees, etc.

Waste mentioned above are NOT collected by the city. Please bring it directly to the incineration plant or ask an authorized collector.

In case of bring the waste into an incineration plant by yourself

- For appointment, please call **072-975-5341**

*Appointment is accepted from 2 weeks up to 2 days prior to the desired bring-in date.

*Appointment to bring in on the same day is not accepted.

- Hours for appointment: Monday ~ Friday (except holiday) **9 : 00 ~ 16 : 00**
- Fee: ¥90 per 10kg

Weekdays (Mon. ~ Fri.)	12 : 45 ~ 15 : 30
Sat. and Sun.	Closed
Holiday (Mon. ~ Sat.)	9 : 30 ~ 11 : 30 / 12 : 45 ~ 15 : 30

Bring-in is not available on Sunday and Saturday (except holiday).

*Please bring the waste in a vehicle with max. load capacity of 3-ton or less (less than 6.3m in length) with 2 persons or more aboard.

*Appointment for commercial waste disposal is not available on holiday, Dec. 29 and 30.

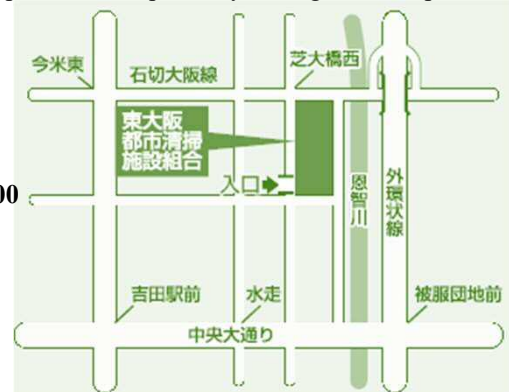
*For hearing and speech impaired, please fill out an application form by downloading from the website (scan the code on the right) and send it by FAX.

In case that you can not bring the waste into an incineration plant by yourself

Contact an authorized waste collector.

- Contact: Higashiosaka Seiso Jigyo Kyodo Kumiai TEL **06-6783-0053**
- Business hours: Monday ~ Friday (except holiday) **9:00 ~ 15:00**
- Fee: Ask the collector as the fee varies depending on the volume and type of waste.

Appointment required by calling Mizuhai plant.

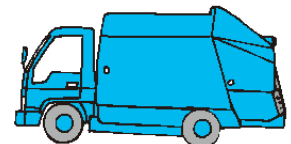


Higashiosaka union of Cleaning Facilities
(Seiso Jigyo Kyodo Kumiai)
4-6-25 Mizuhai, Higashiosaka

TEL 072-962-6021
FAX 072-962-6125



Commercial waste/waste by relocation/ occasional waste/ waste not collected by the city



WASTE NOT COLLECTED BY THE CITY

Ask stores or specified collectors

Hazardous and dangerous waste

- LP gas cylinders ● Thinner ● Paints ● Hazardous chemicals ● Button type batteries
- Waste oil, kerosene or gasoline, etc.

Waste difficult to be disposed

- Soil/sand ● Stones ● Bricks and concrete products (Base for laundry pole, etc.) ● Iron materials (Barbells, etc.) ● Waste tires ● Scooters or motorcycles and their parts ● Machineries with engine or motors ● Automobiles and their parts (Seats, tires and metal chains for tires, etc.) ● Batteries ● Two-wheel carts ● Agricultural machineries ● Electric wheel chairs ● Solar system ● Power generators
- Wire ropes ● Safety box ● Piano ● Sheds and hot houses ● Car parts ● Shutters ● Bath tubs
- Wash basins and kitchen sinks ● Nursing care beds ● Big trees, etc.

To dispose items above mentioned, ask stores, constructors or authorized general waste disposal contractors.

Items subject to Home Appliance Recycling Law

● See P. 8

Home PCs

● See P. 13

Fire extinguishers

- Fire extinguishers are collected by manufacturers and shops.
- Contact: Fire Extinguisher Recycle Promotion Center TEL **03-5829-6773**

Motorcycles

- Motorcycles are collected by designated dealers.
- Contact: Motorcycle Recycle Call Center TEL **050-3000-0727**

WASTE PAPERS

Collected at designated collection sites or by group

Waste papers including newspapers, magazines or cardboards, aluminum cans and returnable bottles can be recycled. Dispose them at designated collection site (See P.21-22) or cooperate with group collection*. **Waste papers are not collected by the city.**

Collection at designated site

●Dispose them in the collection box located at the city hall (1F), each region center or Kankyo Jigyosho.

Group collection

●Please contact each collection group or Recycle-oriented Society Promotion Division (Junkan Shakai Suishin-ka) (TEL: 06-4309-3199)

<*Group collection in communities>

Group collection is an activity by community associations and children's organizations, etc. to voluntarily collect recyclable garbage such as newspapers.

Main items to be collected and how to dispose

The followings are general rules to dispose. For group collection, please dispose by each item following the rules of the group.

Newspapers

- Strap newspapers crosswise or;
- Place them in a paper bag.
- Flyers are also accepted.



Magazines (include books)

- Strap magazines crosswise or;
- Place them in a paper bag.



Cardboards

- Strap cardboards crosswise
- *Please remove labels.



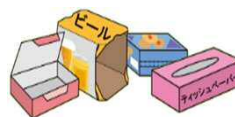
Waste clothes

- Put the item in a transparent plastic bag.
- Wet items are not accepted.

*These items are not collected at city hall and each region center.



Waste papers*



Paper box for food, etc.



Wrapping papers and paper bags



Flyers and pamphlets



Paper tubes

Waste papers

- Strap waste papers crosswise or;
- Place them in a paper bag.
- **Stained or smelly items can not be collected**

*Please contact collector or Recycle-oriented Society Promotion Division (Junkan Shakai Suishin-ka) (06-4309-3199) for details as collectable papers vary depending on the collector.

Paper packs

- Rinse, cut open and dry.
- Strap them crosswise.

*They are also collected at supermarkets (See P. 21-22), but not in the city's facilities.



SMALL HOME APPLIANCES

Designated collection site

Items listed below which can be dropped off into the collection box (20cm x 30cm) are subject to collection.

Video device

- HDD recorders
- Small DVD players

Sound device

- MD players
- Hearing aids
- Earphones. Etc.

Grooming device

- Hair dryers
- Electric shavers, etc.

Video game device

- Desktop type
- Portable type, etc.

Car accessories

- Car GPS
- Car stereo systems, etc.

Accessories for the described items

- Remote controls
- Cables, etc.

Others

- Radio
- Electronic book reading terminal
- Electronic dictionary
- Electronic blood pressure monitor
- Electric thermometer
- Flash light
- Electric calculator
- Watch
- Iron
- etc.

Rule for disposing of small home appliances



- Please dispose the item to the collection box located at city's designated sites or cooperative stores in the city.

See P.21-22 for the list of sites with collection box installed.

- Remove box or bag as well as batteries before disposing.
- Items mentioned below are NOT subject to collection.
 - Waste generated from business activities (See P. 11)
 - Mobile phone or PC, etc. that contain personal information
 - Items subject to "Home appliance recycling law," such as TV or refrigerator (See p. 8)
 - Heat-not-burn cigarettes (See p. 14)



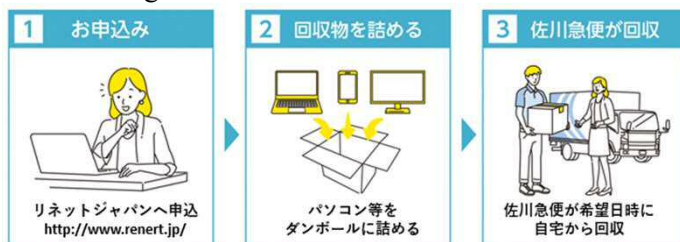
HOME PCs

To be recycled

Please see below to dispose waste PCs. Those items are NOT collected by the city.

By pick up service

Renet Japan Co., Ltd., a cooperative company that has an agreement with Higashiosaka, collects waste PC for free of charge.



Renet Japan Recycle Co., Ltd.
 URL : <https://www.renet.jp/>
 TEL : 0570-085-800 (10:00-17:00)

リネットジャパン 検索



- Erase the data by your own responsibility. (There are free data-erasing software)
- Small home appliance or accessories such as printer can be included with waste PC.
- One waste PC and other collectable items that fit in a cardboard box (Total of 3 dimensions of box must be within 140cm and 20kg) can be collected for free of charge.
- Collection of CRT monitor is charged.

Collected by manufacturers

URL : <https://www.pc3r.jp/> TEL : 03-5282-7685 Business hours: 9:00-12:00/13:00-17:00

*Mon. - Fri. (except year-end and New Year period and holiday)

*Recycle fee will be charged for the PCs without the mark on the right



MERCURY PRODUCTS (Fluorescent tubes and batteries)

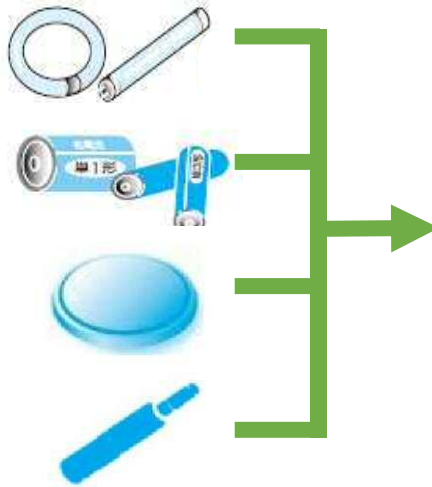
Designated collection site

Fluorescent tubes

Used-up batteries

Coin-shaped batteries*
(Primary and secondary)

Heat-not-burn
cigarette*



Bring it to a city's designated collection site or a cooperative store (See P. 21-22)

*Please dispose coin-shaped batteries and heat-not-burn cigarette in the batteries collection box. They are collected exceptionally in spite of not being dry batteries.

Rule for disposing of mercury products

- Waste fluorescent tubes and batteries must be disposed in the designated box at cooperative stores without placing it in a bag, package or box. (Dispose the package or box at home.)
- Dispose waste fluorescent tubes without breaking them.
- For those who dispose to the collection box at designated stores
 - Do not dispose them when the cooperative stores are closed.
 - Do not dispose them in the box other than installed box in the cooperative stores.
- Only broken fluorescent tubes generated at general household are collected.



Broken fluorescent tubes may cause danger to the neighbors and children playing around. Please dispose them with good manners.



Please follow the chart below when disposing



Broken fluorescent tubes



Dispose them as small unburnable items (P.4)

Incandescent lamps and LED lamps

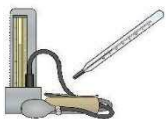


Ask the store where you bought, or dispose them to the collection box installed by BAJ. (Please visit their website.)

Button type batteries



Mercury clinical thermometer and blood pressure apparatus



Bring them to the Junkan Shakai Suishin-ka, public health centers and each Kankyo Jigyosho office.

Mercury products such as fluorescent tubes and batteries generated by business activities

Ask industrial waste disposers or Sangyo Haikibutsu Taisaku-ka. (TEL 06-4309-3207)

SMALL RECHARGEABLE BATTERIES

Designated collection site

Rechargeable batteries are mainly used for the products listed below.

Communication device	● Cordless phone ● Walkie-talkie, etc.	AV equipment	● Digital camera ● Video camera, etc.
OA equipment	● Portable battery charger ● Note-type PC, etc.	Household goods	● Handy cleaner ● Electric tooth brush, etc.
Others	● Gaming device ● Robot vacuum, etc.	● Electric screwdriver	● Electric bicycle



Rule for disposing of small rechargeable batteries

- Please dispose to the collection box installed by the city or cooperative stores.

Please see P. 21-22 for the locations of collection box

Visit the JBRC's website for list of cooperative stores.

- Please follow the instructions below before disposing.

- Remove the batteries from the device (*1, *2)
- Check the recycle mark described on the right on the batteries.
- The metal terminals (+ and - poles) of each battery should be insulated with tape to avoid risk of ignition due to damage.

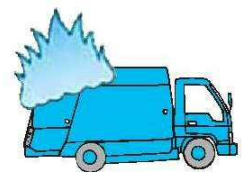
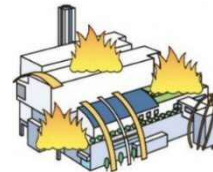
(*1) Dispose the mobile batteries as they are. (It is not necessary to remove from the device or disassembly.)

(*2) If the battery can not be removed from the equipment, please dispose it to the collection box for "Small home appliance."

- Only batteries themselves can be disposed to the collection box. (Do not put them in a plastic bag or box.)
- For items not subject to collection, please contact the manufacturer.
- **Small rechargeable batteries generated only from household can be disposed.**



Request from city government



Fire is occurring often at the incineration plant or on the garbage trucks.

Do not dispose rechargeable batteries or gas cylinders with other garbage.

Small rechargeable batteries

- Rechargeable batteries output a large amount of power in spite of their small size, so they require careful handling due to the high risk of overheating or ignition caused by damage or deformation.

⇒ Please remove the rechargeable batteries and place them in the collection box. (See P. 21-22)

- Gas remained in the cylinders can be a cause of fire.

⇒ Make sure to use it up and dispose them on the "Cans and bottles" day. (See P. 3)

- Disposing items mentioned above min household garbage or small unburnable items may cause fire in the incineration plant or garbage trucks.

⇒ Please visit the website of Higashiosaka Toshi Seiso Shisetu Kumiai.

(Higashiosaka City Cleaning Facilities Union)





“FUREAI” COLLECTION

Application required

About “Fureai” Collection.....To support those who have difficulties placing the garbage at the collection site including the aged and handicapped persons, staff visit them individually to collect household garbage. Upon request, staff also talk to them to check their safety at the time of collection.

Those who can use the service

People who fall into one of the categories listed below and also have difficulties to place the garbage, and don't have any other persons who can help place the garbage.

- ① Those qualified for “care required level 2” or higher.
- ② Those who have physical disability certificate with “1st or 2nd” degree of physical disablement
- ③ Those who have rehabilitation certificate with “A” degree of intellectual disablement
- ④ Those who have mental disability certificate with “1st” degree of physical disablement



Type of waste to be collected

(Free of charge) Household garbage, cans & bottles, unburnable small items, plastic containers and packages and PET bottles
(Charged) Large-sized waste *See P. 10 for fee.



HOME MEDICAL CARE WASTE

Application required

Home medical care waste...

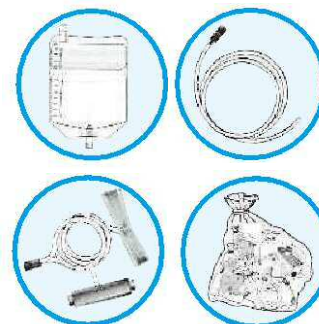
is collected in order to protect personal medical information including medical history. As waste is collected individually, please pass the waste directly to the collector.

Those who can use the service

- ① Person who is receiving home medical examination and home nursing, or
- ② Person who are receiving medical treatment at home

Type of waste to be collected

- Plastic bag for infusion, pooled urine, CAPD and nutrient fluid
- Tube and catheter for suction or infusion line
- Disposable pen type insulin injector, nutrient injector and its cylinder (other than needle)
- Absorbent cotton and gauze, etc.
- Pen type self-injection syringe (Syringes without needle cover is not collected)



- *Injection and infusion needle are collected by doctors or nurses.
- *Self-injection needle without its cover should be returned to a medical institution or pharmacy.
- *Wrapping pouches can be disposed as household garbage.

How to register for using the service

- 1 Apply**
Application is required to use “Fureai” collection and “Home medical care waste collection” service.
 - How to apply: Fill out the necessary information and submit it
 - Place of application: Hokubu Kankyo Jigyosho or Kankyo Jigyoka
 - Application method: By post or in person
- 2 Interview**
After examining the application, staff of Hokubu Kankyo Jigyosho visits the applicant's house to check the eligibility and type of garbage.
- 3 Inform**
Staff will tell whether the application is approved or not. Once approved, collection starts based on the schedule arranged at the time of interview.

*Application form is available at the office mentioned below or by downloading from website.

● Contact
Hokubu Kankyo Jigyosho
 2-1-16 Nishi-zutsumi-hondori-nishi,
 Higashiosaka TEL.06-6789-1851
Kankyo Jigyo-ka
 1-1-1 Aramoto-kita, Higashiosaka
 TEL.06-4309-3200

GARBAGE COLLECTION SCHEDULE LIST BY AREA

A -Ka

	Address	Office in charge	To household garbage collection site			To recyclable garbage collection site		Dead animals
			Household garbage	Cans & bottles	Small unburnable items	Plastics	PET bottles	
a	旭町	Tobu	Tue/Fri	2nd & 4th Wed.	1st & 3rd Wed.	Thu.	1st & 3rd Wed.	Tobu
	足代	Seibu	Tue/Fri	2nd & 4th Wed.	1st & 3rd Wed.	Thu.	1st & 3rd Wed.	Seibu
	足代北(新町)	Hokubu	Tue/Fri	2nd & 4th Wed.	1st & 3rd Wed.	Mon.	1st & 3rd Wed.	Hokubu
	足代南	Seibu	Tue/Fri	2nd & 4th Wed.	1st & 3rd Wed.	Thu.	1st & 3rd Wed.	Seibu
	荒川1・2丁目	Hokubu	Tue/Fri	2nd & 4th Wed.	1st & 3rd Wed.	Thu.	1st & 3rd Wed.	Hokubu
	荒川3丁目	Hokubu	Mon/Thu	1st & 3rd Wed.	2nd & 4th Wed.	Fri.	2nd & 4th Wed.	Hokubu
	荒本	Hokubu	Mon/Thu	1st & 3rd Wed.	2nd & 4th Wed.	Tue.	2nd & 4th Wed.	Hokubu
	荒本北	Hokubu	Tue/Fri	2nd & 4th Wed.	1st & 3rd Wed.	Mon.	1st & 3rd Wed.	Hokubu
	荒本新町1~6, 9	Hokubu	Tue/Fri	2nd & 4th Wed.	1st & 3rd Wed.	Mon.	1st & 3rd Wed.	Hokubu
	荒本新町7, 8	Hokubu	Mon/Thu	1st & 3rd Wed.	2nd & 4th Wed.	Tue.	2nd & 4th Wed.	Hokubu
荒本西	Hokubu	Tue/Fri	2nd & 4th Wed.	1st & 3rd Wed.	Mon.	1st & 3rd Wed.	Hokubu	
i	池島町	Tobu	Tue/Fri	2nd & 4th Wed.	1st & 3rd Wed.	Thu.	1st & 3rd Wed.	Tobu
	池之端町	Tobu	Mon/Thu	1st & 3rd Wed.	2nd & 4th Wed.	Fri.	2nd & 4th Wed.	Tobu
	出雲井町	Tobu	Tue/Fri	2nd & 4th Wed.	1st & 3rd Wed.	Mon.	1st & 3rd Wed.	Tobu
	出雲井本町	Tobu	Mon/Thu	1st & 3rd Wed.	2nd & 4th Wed.	Tue.	2nd & 4th Wed.	Tobu
	稲田上町(新町)	Hokubu	Mon/Thu	1st & 3rd Wed.	2nd & 4th Wed.	Tue.	2nd & 4th Wed.	Hokubu
	稲田本町1丁目1~30	Hokubu	Mon/Thu	1st & 3rd Wed.	2nd & 4th Wed.	Tue.	2nd & 4th Wed.	Hokubu
	稲田本町1丁目31, 32	Hokubu	Tue/Fri	2nd & 4th Wed.	1st & 3rd Wed.	Thu.	1st & 3rd Wed.	Hokubu
	稲田本町2・3丁目	Hokubu	Mon/Thu	1st & 3rd Wed.	2nd & 4th Wed.	Tue.	2nd & 4th Wed.	Hokubu
	稲田三島町	Hokubu	Mon/Thu	1st & 3rd Wed.	2nd & 4th Wed.	Tue.	2nd & 4th Wed.	Hokubu
	稲葉1・4丁目	Chubu	Tue/Fri	2nd & 4th Wed.	1st & 3rd Wed.	Thu.	1st & 3rd Wed.	Chubu
	稲葉2丁目1, 2, 6	Chubu	Tue/Fri	2nd & 4th Wed.	1st & 3rd Wed.	Thu.	1st & 3rd Wed.	Chubu
	稲葉2丁目3~5	Chubu	Mon/Thu	1st & 3rd Wed.	2nd & 4th Wed.	Tue.	2nd & 4th Wed.	Chubu
	稲葉3丁目1, 14	Chubu	Tue/Fri	2nd & 4th Wed.	1st & 3rd Wed.	Thu.	1st & 3rd Wed.	Chubu
	稲葉3丁目2~13, 15, 16	Chubu	Mon/Thu	1st & 3rd Wed.	2nd & 4th Wed.	Tue.	2nd & 4th Wed.	Chubu
	今米	Chubu	Mon/Thu	1st & 3rd Wed.	2nd & 4th Wed.	Fri.	2nd & 4th Wed.	Chubu
	岩田町2丁目	Chubu	Tue/Fri	2nd & 4th Wed.	1st & 3rd Wed.	Mon.	1st & 3rd Wed.	Chubu
岩田町1・3~6丁目	Chubu	Tue/Fri	2nd & 4th Wed.	1st & 3rd Wed.	Thu.	1st & 3rd Wed.	Chubu	
u	瓜生堂1・2丁目	Chubu	Tue/Fri	2nd & 4th Wed.	1st & 3rd Wed.	Thu.	1st & 3rd Wed.	Chubu
	瓜生堂3丁目	Seibu	Mon/Thu	1st & 3rd Wed.	2nd & 4th Wed.	Fri.	2nd & 4th Wed.	Seibu
e	永和1丁目1~14	Hokubu	Mon/Thu	1st & 3rd Wed.	2nd & 4th Wed.	Fri.	2nd & 4th Wed.	Hokubu
	永和 上記以外	Seibu	Mon/Thu	1st & 3rd Wed.	2nd & 4th Wed.	Fri.	2nd & 4th Wed.	Seibu
o	近江堂	Seibu	Mon/Thu	1st & 3rd Wed.	2nd & 4th Wed.	Tue.	2nd & 4th Wed.	Seibu
	大蓮北	Seibu	Tue/Fri	2nd & 4th Wed.	1st & 3rd Wed.	Mon.	1st & 3rd Wed.	Seibu
	大蓮東1~2丁目・4丁目12~14	Seibu	Tue/Fri	2nd & 4th Wed.	1st & 3rd Wed.	Thu.	1st & 3rd Wed.	Seibu
	大蓮東 上記以外	Seibu	Tue/Fri	2nd & 4th Wed.	1st & 3rd Wed.	Mon.	1st & 3rd Wed.	Seibu
	大蓮南	Seibu	Tue/Fri	2nd & 4th Wed.	1st & 3rd Wed.	Mon.	1st & 3rd Wed.	Seibu
ka	柏田西(本町)	Seibu	Tue/Fri	2nd & 4th Wed.	1st & 3rd Wed.	Mon.	1st & 3rd Wed.	Seibu
	柏田東町	Seibu	Tue/Fri	2nd & 4th Wed.	1st & 3rd Wed.	Thu.	1st & 3rd Wed.	Seibu
	金岡1・2・4丁目・3丁目2~28	Seibu	Tue/Fri	2nd & 4th Wed.	1st & 3rd Wed.	Thu.	1st & 3rd Wed.	Seibu
	金岡3丁目1	Seibu	Mon/Thu	1st & 3rd Wed.	2nd & 4th Wed.	Tue.	2nd & 4th Wed.	Seibu
	金物町	Seibu	Mon/Thu	1st & 3rd Wed.	2nd & 4th Wed.	Tue.	2nd & 4th Wed.	Seibu
	加納	Chubu	Mon/Thu	1st & 3rd Wed.	2nd & 4th Wed.	Fri.	2nd & 4th Wed.	Chubu
	上石切町	Tobu	Mon/Thu	1st & 3rd Wed.	2nd & 4th Wed.	Fri.	2nd & 4th Wed.	Tobu
	上小阪	Seibu	Mon/Thu	1st & 3rd Wed.	2nd & 4th Wed.	Tue.	2nd & 4th Wed.	Seibu
	上四条町	Tobu	Tue/Fri	2nd & 4th Wed.	1st & 3rd Wed.	Mon.	1st & 3rd Wed.	Tobu
	上六万寺町	Tobu	Tue/Fri	2nd & 4th Wed.	1st & 3rd Wed.	Mon.	1st & 3rd Wed.	Tobu
	川田	Chubu	Mon/Thu	1st & 3rd Wed.	2nd & 4th Wed.	Fri.	2nd & 4th Wed.	Chubu
	河内町	Tobu	Mon/Thu	1st & 3rd Wed.	2nd & 4th Wed.	Tue.	2nd & 4th Wed.	Tobu
	川中	Chubu	Mon/Thu	1st & 3rd Wed.	2nd & 4th Wed.	Fri.	2nd & 4th Wed.	Chubu
	川俣	Hokubu	Tue/Fri	2nd & 4th Wed.	1st & 3rd Wed.	Thu.	1st & 3rd Wed.	Hokubu
川俣本町	Hokubu	Mon/Thu	1st & 3rd Wed.	2nd & 4th Wed.	Tue.	2nd & 4th Wed.	Hokubu	
神田町	Tobu	Tue/Fri	2nd & 4th Wed.	1st & 3rd Wed.	Thu.	1st & 3rd Wed.	Tobu	

Please dispose the plastic containers/packages and PET bottles at recyclable garbage collection site. (Contact: Hokubu Kanryo Jigyosho)

Garbage collection schedule list by area

Ki-Ta		To household garbage collection site				To recyclable garbage collection site		Dead animals
	Address	Office in charge	Household garbage	Cans & bottles	Small unburnable items	Plastics	PET bottles	
ki	岸田堂北町(西・南町)	Seibu	Tue/Fri	2nd & 4th Wed.	1st & 3rd Wed.	Thu.	1st & 3rd Wed.	Seibu
	衣摺1丁目	Seibu	Tue/Fri	2nd & 4th Wed.	1st & 3rd Wed.	Thu.	1st & 3rd Wed.	Seibu
	衣摺2～6丁目	Seibu	Tue/Fri	2nd & 4th Wed.	1st & 3rd Wed.	Mon.	1st & 3rd Wed.	Seibu
	北石切町	Tobu	Mon/Thu	1st & 3rd Wed.	2nd & 4th Wed.	Fri.	2nd & 4th Wed.	Tobu
	北鴻池町	Chubu	Mon/Thu	1st & 3rd Wed.	2nd & 4th Wed.	Fri.	2nd & 4th Wed.	Chubu
	客坊町	Tobu	Tue/Fri	2nd & 4th Wed.	1st & 3rd Wed.	Mon.	1st & 3rd Wed.	Tobu
	喜里川町	Tobu	Mon/Thu	1st & 3rd Wed.	2nd & 4th Wed.	Tue.	2nd & 4th Wed.	Tobu
ku	日下町	Tobu	Mon/Thu	1st & 3rd Wed.	2nd & 4th Wed.	Fri.	2nd & 4th Wed.	Tobu
	楠根	Hokubu	Mon/Thu	1st & 3rd Wed.	2nd & 4th Wed.	Tue.	2nd & 4th Wed.	Hokubu
ke	源氏ヶ丘	Seibu	Tue/Fri	2nd & 4th Wed.	1st & 3rd Wed.	Thu.	1st & 3rd Wed.	Seibu
ko	鴻池町	Chubu	Mon/Thu	1st & 3rd Wed.	2nd & 4th Wed.	Fri.	2nd & 4th Wed.	Chubu
	鴻池徳庵町	Hokubu	Mon/Thu	1st & 3rd Wed.	2nd & 4th Wed.	Tue.	2nd & 4th Wed.	Hokubu
	鴻池本町(元町)	Chubu	Mon/Thu	1st & 3rd Wed.	2nd & 4th Wed.	Fri.	2nd & 4th Wed.	Chubu
	小阪1丁目1～5	Hokubu	Tue/Fri	2nd & 4th Wed.	1st & 3rd Wed.	Mon.	1st & 3rd Wed.	Hokubu
	小阪1丁目6～15, 2・3丁目	Hokubu	Mon/Thu	1st & 3rd Wed.	2nd & 4th Wed.	Fri.	2nd & 4th Wed.	Hokubu
	小阪本町	Seibu	Mon/Thu	1st & 3rd Wed.	2nd & 4th Wed.	Fri.	2nd & 4th Wed.	Seibu
	五条町	Tobu	Tue/Fri	2nd & 4th Wed.	1st & 3rd Wed.	Mon.	1st & 3rd Wed.	Tobu
	寿町1丁目	Seibu	Tue/Fri	2nd & 4th Wed.	1st & 3rd Wed.	Thu.	1st & 3rd Wed.	Seibu
	寿町2・3丁目	Seibu	Tue/Fri	2nd & 4th Wed.	1st & 3rd Wed.	Mon.	1st & 3rd Wed.	Seibu
	古箕輪	Chubu	Mon/Thu	1st & 3rd Wed.	2nd & 4th Wed.	Tue.	2nd & 4th Wed.	Chubu
	小若江	Seibu	Mon/Thu	1st & 3rd Wed.	2nd & 4th Wed.	Tue.	2nd & 4th Wed.	Seibu
sa	桜町	Tobu	Tue/Fri	2nd & 4th Wed.	1st & 3rd Wed.	Thu.	1st & 3rd Wed.	Tobu
	三ノ瀬1・2丁目	Seibu	Tue/Fri	2nd & 4th Wed.	1st & 3rd Wed.	Thu.	1st & 3rd Wed.	Seibu
	三ノ瀬3丁目	Hokubu	Tue/Fri	2nd & 4th Wed.	1st & 3rd Wed.	Thu.	1st & 3rd Wed.	Hokubu
shi	新喜多2丁目6-9～6-23	Hokubu	Tue/Fri	2nd & 4th Wed.	1st & 3rd Wed.	Thu.	1st & 3rd Wed.	Hokubu
	新喜多 上記以外	Hokubu	Tue/Fri	2nd & 4th Wed.	1st & 3rd Wed.	Mon.	1st & 3rd Wed.	Hokubu
	四条町	Tobu	Tue/Fri	2nd & 4th Wed.	1st & 3rd Wed.	Mon.	1st & 3rd Wed.	Tobu
	七軒家	Hokubu	Mon/Thu	1st & 3rd Wed.	2nd & 4th Wed.	Tue.	2nd & 4th Wed.	Hokubu
	渋川町	Seibu	Tue/Fri	2nd & 4th Wed.	1st & 3rd Wed.	Mon.	1st & 3rd Wed.	Seibu
	島之内	Chubu	Mon/Thu	1st & 3rd Wed.	2nd & 4th Wed.	Tue.	2nd & 4th Wed.	Chubu
	下小阪	Seibu	Mon/Thu	1st & 3rd Wed.	2nd & 4th Wed.	Fri.	2nd & 4th Wed.	Seibu
	下六万寺町	Tobu	Tue/Fri	2nd & 4th Wed.	1st & 3rd Wed.	Thu.	1st & 3rd Wed.	Tobu
	俊徳町	Seibu	Tue/Fri	2nd & 4th Wed.	1st & 3rd Wed.	Thu.	1st & 3rd Wed.	Seibu
	昭和町	Tobu	Tue/Fri	2nd & 4th Wed.	1st & 3rd Wed.	Thu.	1st & 3rd Wed.	Tobu
	新池島町	Tobu	Tue/Fri	2nd & 4th Wed.	1st & 3rd Wed.	Thu.	1st & 3rd Wed.	Tobu
	新上小阪	Seibu	Mon/Thu	1st & 3rd Wed.	2nd & 4th Wed.	Tue.	2nd & 4th Wed.	Seibu
	新家(中町・西町・東町)	Hokubu	Mon/Thu	1st & 3rd Wed.	2nd & 4th Wed.	Fri.	2nd & 4th Wed.	Hokubu
	新鴻池町	Chubu	Mon/Thu	1st & 3rd Wed.	2nd & 4th Wed.	Tue.	2nd & 4th Wed.	Chubu
	新庄(西・東・南)	Chubu	Mon/Thu	1st & 3rd Wed.	2nd & 4th Wed.	Tue.	2nd & 4th Wed.	Chubu
	新町	Tobu	Mon/Thu	1st & 3rd Wed.	2nd & 4th Wed.	Tue.	2nd & 4th Wed.	Tobu
su	末広町	Tobu	Tue/Fri	2nd & 4th Wed.	1st & 3rd Wed.	Thu.	1st & 3rd Wed.	Tobu
	角田	Chubu	Mon/Thu	1st & 3rd Wed.	2nd & 4th Wed.	Tue.	2nd & 4th Wed.	Chubu
se	善根寺町	Tobu	Mon/Thu	1st & 3rd Wed.	2nd & 4th Wed.	Fri.	2nd & 4th Wed.	Tobu
ta	太平寺	Seibu	Tue/Fri	2nd & 4th Wed.	1st & 3rd Wed.	Thu.	1st & 3rd Wed.	Seibu
	高井田	Hokubu	Tue/Fri	2nd & 4th Wed.	1st & 3rd Wed.	Mon.	1st & 3rd Wed.	Hokubu
	高井田中1～2丁目	Hokubu	Tue/Fri	2nd & 4th Wed.	1st & 3rd Wed.	Mon.	1st & 3rd Wed.	Hokubu
	高井田中3～5丁目	Hokubu	Tue/Fri	2nd & 4th Wed.	1st & 3rd Wed.	Thu.	1st & 3rd Wed.	Hokubu
	高井田西	Hokubu	Tue/Fri	2nd & 4th Wed.	1st & 3rd Wed.	Thu.	1st & 3rd Wed.	Hokubu
	高井田本通	Hokubu	Tue/Fri	2nd & 4th Wed.	1st & 3rd Wed.	Thu.	1st & 3rd Wed.	Hokubu
	高井田元町	Hokubu	Tue/Fri	2nd & 4th Wed.	1st & 3rd Wed.	Mon.	1st & 3rd Wed.	Hokubu
	鷹殿町	Tobu	Mon/Thu	1st & 3rd Wed.	2nd & 4th Wed.	Tue.	2nd & 4th Wed.	Tobu
	宝町	Tobu	Mon/Thu	1st & 3rd Wed.	2nd & 4th Wed.	Tue.	2nd & 4th Wed.	Tobu
	立花町	Tobu	Mon/Thu	1st & 3rd Wed.	2nd & 4th Wed.	Tue.	2nd & 4th Wed.	Tobu
	玉串町西(東)	Chubu	Tue/Fri	2nd & 4th Wed.	1st & 3rd Wed.	Mon.	1st & 3rd Wed.	Chubu
	玉串元町	Chubu	Tue/Fri	2nd & 4th Wed.	1st & 3rd Wed.	Mon.	1st & 3rd Wed.	Chubu

Please dispose the plastic containers/packages and PET bottles at recyclable garbage collection site. (Contact: Hokubu Kankyo Jigyosho)

Garbage collection schedule list by area

● In case of housing complex consisted of more than 50 apartments, collection day may differ.
Please contact Tobu Kankyo Jigyosho at 072-984-8005.

● To contact each Kankyo Jigyosho, please refer to the list of contact on the back side of this pamphlet.

● 1st Wednesday refers to the Wednesday that comes first of each month.

GARBAGE COLLECTION SCHEDULE LIST BY AREA

Chi - Hi		To household garbage collection site				To recyclable garbage collection site		Dead animals
	Address	Office in charge	Household garbage	Cans & bottles	Small unburnable items	Plastics	PET bottles	
chi	長栄寺	Hokubu	Tue/Fri	2nd & 4th Wed.	1st & 3rd Wed.	Mon.	1st & 3rd Wed.	Hokubu
	長堂	Hokubu	Tue/Fri	2nd & 4th Wed.	1st & 3rd Wed.	Mon.	1st & 3rd Wed.	Hokubu
te to	寺前町	Seibu	Tue/Fri	2nd & 4th Wed.	1st & 3rd Wed.	Thu.	1st & 3rd Wed.	Seibu
	徳庵本町	Hokubu	Mon/Thu	1st & 3rd Wed.	2nd & 4th Wed.	Tue.	2nd & 4th Wed.	Hokubu
	友井1~4丁目・5丁目1~5	Seibu	Mon/Thu	1st & 3rd Wed.	2nd & 4th Wed.	Tue.	2nd & 4th Wed.	Seibu
(※)	友井5丁目6	Seibu	Tue/Fri	2nd & 4th Wed.	1st & 3rd Wed.			Seibu
	豊浦町	Tobu	Mon/Thu	1st & 3rd Wed.	2nd & 4th Wed.	Tue.	2nd & 4th Wed.	Tobu
	鳥居町	Tobu	Mon/Thu	1st & 3rd Wed.	2nd & 4th Wed.	Tue.	2nd & 4th Wed.	Tobu
na	中石切町1・2・4丁目	Tobu	Mon/Thu	1st & 3rd Wed.	2nd & 4th Wed.	Fri.	2nd & 4th Wed.	Tobu
	中石切町3・5~7丁目	Tobu	Mon/Thu	1st & 3rd Wed.	2nd & 4th Wed.	Tue.	2nd & 4th Wed.	Tobu
	中鴻池町3丁目3, 4, 11, 12	Chubu	Mon/Thu	1st & 3rd Wed.	2nd & 4th Wed.	Tue.	2nd & 4th Wed.	Chubu
	中鴻池町 上記以外	Chubu	Mon/Thu	1st & 3rd Wed.	2nd & 4th Wed.	Fri.	2nd & 4th Wed.	Chubu
	中小阪	Seibu	Mon/Thu	1st & 3rd Wed.	2nd & 4th Wed.	Fri.	2nd & 4th Wed.	Seibu
	中新開	Chubu	Mon/Thu	1st & 3rd Wed.	2nd & 4th Wed.	Tue.	2nd & 4th Wed.	Chubu
	長瀬町	Seibu	Tue/Fri	2nd & 4th Wed.	1st & 3rd Wed.	Thu.	1st & 3rd Wed.	Seibu
	長田	Hokubu	Mon/Thu	1st & 3rd Wed.	2nd & 4th Wed.	Fri.	2nd & 4th Wed.	Hokubu
	長田中1丁目	Hokubu	Mon/Thu	1st & 3rd Wed.	2nd & 4th Wed.	Fri.	2nd & 4th Wed.	Hokubu
	長田中2~5丁目	Hokubu	Mon/Thu	1st & 3rd Wed.	2nd & 4th Wed.	Tue.	2nd & 4th Wed.	Hokubu
	長田西1丁目(下記以外)・2丁目	Hokubu	Mon/Thu	1st & 3rd Wed.	2nd & 4th Wed.	Fri.	2nd & 4th Wed.	Hokubu
(※)	長田西1丁目4~11~4-15	Hokubu	Tue/Fri	2nd & 4th Wed.	1st & 3rd Wed.	Thu.	1st & 3rd Wed.	Hokubu
	長田西3~6丁目	Hokubu	Mon/Thu	1st & 3rd Wed.	2nd & 4th Wed.	Tue.	2nd & 4th Wed.	Hokubu
	長田東1丁目	Hokubu	Mon/Thu	1st & 3rd Wed.	2nd & 4th Wed.	Fri.	2nd & 4th Wed.	Hokubu
	長田東2~5丁目	Hokubu	Mon/Thu	1st & 3rd Wed.	2nd & 4th Wed.	Tue.	2nd & 4th Wed.	Hokubu
	中野	Chubu	Mon/Thu	1st & 3rd Wed.	2nd & 4th Wed.	Tue.	2nd & 4th Wed.	Chubu
	中野南	Chubu	Tue/Fri	2nd & 4th Wed.	1st & 3rd Wed.	Thu.	1st & 3rd Wed.	Chubu
	南荘町	Tobu	Mon/Thu	1st & 3rd Wed.	2nd & 4th Wed.	Tue.	2nd & 4th Wed.	Tobu
ni	西石切町1丁目	Tobu	Mon/Thu	1st & 3rd Wed.	2nd & 4th Wed.	Fri.	2nd & 4th Wed.	Tobu
	西石切町2~7丁目	Tobu	Mon/Thu	1st & 3rd Wed.	2nd & 4th Wed.	Tue.	2nd & 4th Wed.	Tobu
	西岩田1・2・4丁目	Chubu	Tue/Fri	2nd & 4th Wed.	1st & 3rd Wed.	Thu.	1st & 3rd Wed.	Chubu
	西岩田3丁目	Hokubu	Mon/Thu	1st & 3rd Wed.	2nd & 4th Wed.	Fri.	2nd & 4th Wed.	Hokubu
	西上小阪	Seibu	Mon/Thu	1st & 3rd Wed.	2nd & 4th Wed.	Tue.	2nd & 4th Wed.	Seibu
	西鴻池町1・2丁目	Chubu	Mon/Thu	1st & 3rd Wed.	2nd & 4th Wed.	Fri.	2nd & 4th Wed.	Chubu
	西鴻池町3・4丁目	Hokubu	Mon/Thu	1st & 3rd Wed.	2nd & 4th Wed.	Tue.	2nd & 4th Wed.	Hokubu
	西堤(学園町・楠町・西)	Hokubu	Tue/Fri	2nd & 4th Wed.	1st & 3rd Wed.	Thu.	1st & 3rd Wed.	Hokubu
	西堤本通西1丁目・2丁目1	Hokubu	Tue/Fri	2nd & 4th Wed.	1st & 3rd Wed.	Mon.	1st & 3rd Wed.	Hokubu
	西堤本通西2丁目2~6・3丁目	Hokubu	Tue/Fri	2nd & 4th Wed.	1st & 3rd Wed.	Thu.	1st & 3rd Wed.	Hokubu
	西堤本通東	Hokubu	Tue/Fri	2nd & 4th Wed.	1st & 3rd Wed.	Thu.	1st & 3rd Wed.	Hokubu
nu	額田町	Tobu	Mon/Thu	1st & 3rd Wed.	2nd & 4th Wed.	Tue.	2nd & 4th Wed.	Tobu
	布市町	Tobu	Mon/Thu	1st & 3rd Wed.	2nd & 4th Wed.	Fri.	2nd & 4th Wed.	Tobu
ha	箱殿町	Tobu	Mon/Thu	1st & 3rd Wed.	2nd & 4th Wed.	Tue.	2nd & 4th Wed.	Tobu
	花園西町(東町・本町)	Chubu	Tue/Fri	2nd & 4th Wed.	1st & 3rd Wed.	Mon.	1st & 3rd Wed.	Chubu
hi	東石切町	Tobu	Mon/Thu	1st & 3rd Wed.	2nd & 4th Wed.	Fri.	2nd & 4th Wed.	Tobu
	東上小阪	Seibu	Mon/Thu	1st & 3rd Wed.	2nd & 4th Wed.	Tue.	2nd & 4th Wed.	Seibu
	東鴻池町1・2・5丁目	Chubu	Mon/Thu	1st & 3rd Wed.	2nd & 4th Wed.	Fri.	2nd & 4th Wed.	Chubu
	東鴻池町3・4丁目	Chubu	Mon/Thu	1st & 3rd Wed.	2nd & 4th Wed.	Tue.	2nd & 4th Wed.	Chubu
	東豊浦町	Tobu	Tue/Fri	2nd & 4th Wed.	1st & 3rd Wed.	Mon.	1st & 3rd Wed.	Tobu
	東山町	Tobu	Mon/Thu	1st & 3rd Wed.	2nd & 4th Wed.	Tue.	2nd & 4th Wed.	Tobu
	菱江	Chubu	Tue/Fri	2nd & 4th Wed.	1st & 3rd Wed.	Thu.	1st & 3rd Wed.	Chubu
	菱屋西1・2丁目	Seibu	Mon/Thu	1st & 3rd Wed.	2nd & 4th Wed.	Tue.	2nd & 4th Wed.	Seibu
	菱屋西3・4丁目	Seibu	Mon/Thu	1st & 3rd Wed.	2nd & 4th Wed.	Fri.	2nd & 4th Wed.	Seibu
	菱屋西5・6丁目	Hokubu	Tue/Fri	2nd & 4th Wed.	1st & 3rd Wed.	Mon.	1st & 3rd Wed.	Hokubu
	菱屋東1丁目	Chubu	Tue/Fri	2nd & 4th Wed.	1st & 3rd Wed.	Thu.	1st & 3rd Wed.	Chubu
(※)	菱屋東2丁目1~15	Chubu	Tue/Fri	2nd & 4th Wed.	1st & 3rd Wed.	Thu.	1st & 3rd Wed.	Chubu
(※)	菱屋東2丁目16~18	Hokubu	Mon/Thu	1st & 3rd Wed.	2nd & 4th Wed.	Tue.	2nd & 4th Wed.	Hokubu
	菱屋東3丁目1~6, 9~14	Hokubu	Mon/Thu	1st & 3rd Wed.	2nd & 4th Wed.	Tue.	2nd & 4th Wed.	Hokubu
	菱屋東3丁目7, 8	Chubu	Tue/Fri	2nd & 4th Wed.	1st & 3rd Wed.	Thu.	1st & 3rd Wed.	Chubu
	瓢箪山町	Tobu	Tue/Fri	2nd & 4th Wed.	1st & 3rd Wed.	Mon.	1st & 3rd Wed.	Tobu

Please dispose the plastic containers/packages and PET bottles at recyclable garbage collection site. (Contact: Hokubu Kankyo Jigyosho)

Garbage collection schedule list by area

Fu - Wa			To household garbage collection site			To recyclable garbage collection site		Dead animals
	Address	Office in charge	Household garbage	Cans & bottles	Small unburnable items	Plastics	PET bottles	
fu	藤戸新田	Hokubu	Mon/Thu	1st & 3rd Wed.	2nd & 4th Wed.	Fri.	2nd & 4th Wed.	Hokubu
ho	宝持1・4丁目	Seibu	Mon/Thu	1st & 3rd Wed.	2nd & 4th Wed.	Fri.	2nd & 4th Wed.	Seibu
	宝持2・3丁目	Seibu	Mon/Thu	1st & 3rd Wed.	2nd & 4th Wed.	Tue.	2nd & 4th Wed.	Seibu
	本庄(中・西・東)	Chubu	Mon/Thu	1st & 3rd Wed.	2nd & 4th Wed.	Tue.	2nd & 4th Wed.	Chubu
	本町	Tobu	Mon/Thu	1st & 3rd Wed.	2nd & 4th Wed.	Tue.	2nd & 4th Wed.	Tobu
ma	松原	Chubu	Mon/Thu	1st & 3rd Wed.	2nd & 4th Wed.	Fri.	2nd & 4th Wed.	Chubu
	松原南	Chubu	Tue/Fri	2nd & 4th Wed.	1st & 3rd Wed.	Mon.	1st & 3rd Wed.	Chubu
mi	御厨	Hokubu	Mon/Thu	1st & 3rd Wed.	2nd & 4th Wed.	Fri.	2nd & 4th Wed.	Hokubu
(※)	御厨栄町	Hokubu	Mon/Thu	1st & 3rd Wed.	2nd & 4th Wed.	Fri.	2nd & 4th Wed.	Hokubu
	御厨中	Hokubu	Mon/Thu	1st & 3rd Wed.	2nd & 4th Wed.	Fri.	2nd & 4th Wed.	Hokubu
	御厨西ノ町	Hokubu	Mon/Thu	1st & 3rd Wed.	2nd & 4th Wed.	Fri.	2nd & 4th Wed.	Hokubu
	御厨東	Hokubu	Mon/Thu	1st & 3rd Wed.	2nd & 4th Wed.	Fri.	2nd & 4th Wed.	Hokubu
	御厨南	Hokubu	Mon/Thu	1st & 3rd Wed.	2nd & 4th Wed.	Fri.	2nd & 4th Wed.	Hokubu
	三島	Chubu	Mon/Thu	1st & 3rd Wed.	2nd & 4th Wed.	Tue.	2nd & 4th Wed.	Chubu
	水走	Chubu	Mon/Thu	1st & 3rd Wed.	2nd & 4th Wed.	Fri.	2nd & 4th Wed.	Chubu
	南上小阪	Seibu	Mon/Thu	1st & 3rd Wed.	2nd & 4th Wed.	Tue.	2nd & 4th Wed.	Seibu
	南鴻池町1丁目	Chubu	Mon/Thu	1st & 3rd Wed.	2nd & 4th Wed.	Fri.	2nd & 4th Wed.	Chubu
	南鴻池町2丁目	Chubu	Mon/Thu	1st & 3rd Wed.	2nd & 4th Wed.	Tue.	2nd & 4th Wed.	Chubu
	南四条町	Tobu	Tue/Fri	2nd & 4th Wed.	1st & 3rd Wed.	Mon.	1st & 3rd Wed.	Tobu
	箕輪	Chubu	Mon/Thu	1st & 3rd Wed.	2nd & 4th Wed.	Tue.	2nd & 4th Wed.	Chubu
	御幸町	Tobu	Tue/Fri	2nd & 4th Wed.	1st & 3rd Wed.	Thu.	1st & 3rd Wed.	Tobu
mo	元町	Tobu	Mon/Thu	1st & 3rd Wed.	2nd & 4th Wed.	Fri.	2nd & 4th Wed.	Tobu
	森河内西	Hokubu	Tue/Fri	2nd & 4th Wed.	1st & 3rd Wed.	Thu.	1st & 3rd Wed.	Hokubu
	森河内東	Hokubu	Tue/Fri	2nd & 4th Wed.	1st & 3rd Wed.	Thu.	1st & 3rd Wed.	Hokubu
ya	山手町	Tobu	Tue/Fri	2nd & 4th Wed.	1st & 3rd Wed.	Mon.	1st & 3rd Wed.	Tobu
	弥生町	Tobu	Mon/Thu	1st & 3rd Wed.	2nd & 4th Wed.	Tue.	2nd & 4th Wed.	Tobu
yo	横小路町1~4丁目	Tobu	Tue/Fri	2nd & 4th Wed.	1st & 3rd Wed.	Mon.	1st & 3rd Wed.	Tobu
	横小路町5・6丁目	Tobu	Tue/Fri	2nd & 4th Wed.	1st & 3rd Wed.	Thu.	1st & 3rd Wed.	Tobu
	横沼町	Seibu	Mon/Thu	1st & 3rd Wed.	2nd & 4th Wed.	Tue.	2nd & 4th Wed.	Seibu
	横枕	Chubu	Mon/Thu	1st & 3rd Wed.	2nd & 4th Wed.	Tue.	2nd & 4th Wed.	Chubu
	横枕西	Chubu	Mon/Thu	1st & 3rd Wed.	2nd & 4th Wed.	Tue.	2nd & 4th Wed.	Chubu
	横枕南	Chubu	Tue/Fri	2nd & 4th Wed.	1st & 3rd Wed.	Thu.	1st & 3rd Wed.	Chubu
	吉田1~4丁目	Chubu	Mon/Thu	1st & 3rd Wed.	2nd & 4th Wed.	Tue.	2nd & 4th Wed.	Chubu
	吉田5丁目1, 2, 7~10	Chubu	Tue/Fri	2nd & 4th Wed.	1st & 3rd Wed.	Mon.	1st & 3rd Wed.	Chubu
(※)	吉田5丁目3~6, 11~16	Chubu	Mon/Thu	1st & 3rd Wed.	2nd & 4th Wed.	Tue.	2nd & 4th Wed.	Chubu
	吉田6~9丁目	Chubu	Tue/Fri	2nd & 4th Wed.	1st & 3rd Wed.	Mon.	1st & 3rd Wed.	Chubu
	吉田下島	Chubu	Mon/Thu	1st & 3rd Wed.	2nd & 4th Wed.	Tue.	2nd & 4th Wed.	Chubu
	吉田本町1丁目	Chubu	Mon/Thu	1st & 3rd Wed.	2nd & 4th Wed.	Tue.	2nd & 4th Wed.	Chubu
	吉田本町2・3丁目	Chubu	Mon/Thu	1st & 3rd Wed.	2nd & 4th Wed.	Fri.	2nd & 4th Wed.	Chubu
(※)	吉原	Chubu	Mon/Thu	1st & 3rd Wed.	2nd & 4th Wed.	Tue.	2nd & 4th Wed.	Chubu
	吉松	Seibu	Tue/Fri	2nd & 4th Wed.	1st & 3rd Wed.	Thu.	1st & 3rd Wed.	Seibu
ro	六万寺町	Tobu	Tue/Fri	2nd & 4th Wed.	1st & 3rd Wed.	Mon.	1st & 3rd Wed.	Tobu
wa	若江北町	Chubu	Tue/Fri	2nd & 4th Wed.	1st & 3rd Wed.	Thu.	1st & 3rd Wed.	Chubu
	若江西新町1~3丁目	Seibu	Mon/Thu	1st & 3rd Wed.	2nd & 4th Wed.	Fri.	2nd & 4th Wed.	Seibu
	若江西新町4・5丁目	Seibu	Mon/Thu	1st & 3rd Wed.	2nd & 4th Wed.	Tue.	2nd & 4th Wed.	Seibu
	若江東町	Chubu	Tue/Fri	2nd & 4th Wed.	1st & 3rd Wed.	Mon.	1st & 3rd Wed.	Chubu
	若江本町(南町)	Chubu	Tue/Fri	2nd & 4th Wed.	1st & 3rd Wed.	Thu.	1st & 3rd Wed.	Chubu
	若草町	Tobu	Tue/Fri	2nd & 4th Wed.	1st & 3rd Wed.	Thu.	1st & 3rd Wed.	Tobu

Please dispose the plastic containers/packages and PET bottles at recyclable garbage collection site. (Contact: Hokubu Kankyo Jigyosho)

Garbage collection schedule list by area

- In case of housing complex consisted of more than 50 apartments, collection day may differ. Please contact Tobu Kankyo Jigyosho at 072-984-8005.
- Collection schedule may be different. Please contact office in your area.
- Areas with * mark To contact each Kankyo Jigyosho, please refer to the list of contact on the back side of this pamphlet.
- 1st Wednesday refers to the Wednesday that comes first of each month.

LIST OF CITY'S DESIGNATED COLLECTION SITE AND COOPEATIVE STORES

Name of store	Address	Fluorescent tubes	Batteries	Small rechargeable batteries	Small electric appliance	Papers	PET bottles	White trays	Paper packs	Closed day
Northern area										
コノミヤ徳庵店	稲田上町2-2-1						○	●	●	
フレスポ東大阪	稲田新町3-9-64		●	○						
公 楠根リジョンセンター(市民プラザ)	楠根1-12-12	○	○	○	○					1 st / 3 rd Wed.*
稲田商店街	稲田本町3-5-15								●	
公 市役所本庁舎	荒本北1-1-1	○	○	○	○					Sat/Sun/Holiday
フレスポ長田	長田中2-5-23				○					
公 荒本人権文化センター	荒本2-6-1	○	○	○	○					Sun/Holiday
イオンタウン小阪(マックスパリュ小阪店)	御厨栄町1-6-6				○		○	●	●	
東大阪天満電器	西堤本通東1-2-28	○								Sun
公 北部環境事業所	西堤本通西2-1-16	○	○	○	○	○	○			Sat/Sun
ヤマトデンキ	西堤楠町3-8-14	○								Sun/Holiday
オオミデンキ	高井田元町1-2-5	○	●							
公 東大阪市社会福祉協議会(旧総合福祉センター)	高井田元町1-2-13	○	○	○						
プライムテック高井田店	高井田元町1-16-18	○								Sun/Holiday
コナカムセン	高井田元町2-25-10	○								Sun
イオン布施駅前店	長堂1-8-37		●				○	●	●	
公 布施駅前リジョンセンター(市民プラザ)	長堂1-8-37 ヴェルノール布施5階	○	○	○	○					2 nd & 4 th Wed *
タイガー電器	長堂1-15-16	○	●							Wed/Holiday
公 社会教育センター	長堂1-17-29	○	○							Mon/Holiday
プライムテック本店	長堂2-16-16	○								Sun/Holiday
マサミデンキ	森河内西2-22-3	○								Sun
ジョイスヒサトミ	森河内東2-13-4	○	●							Sun
ライフ高井田店	高井田西6-1-1						○	●	●	
ユアーズ東大阪店	小阪2-10-29	○								Sun
本多電気商会	小阪2-17-19	○								Sun/Holiday
ダイエー東大阪店	西岩田3-2-3						○	●	●	
フジデンキ菱屋東店(パナットふじい)	菱屋東2-18-5	○	●							Thu
Western area										
丸若電気商会	小阪本町2-3-14	○								
スズキデンキ小阪店	小阪本町2-8-12	○								Thu/Holiday
ライフ八戸ノ里店	下小阪5-2-2				○		●	●	●	
アミューズモリデン	中小阪3-5-18	○	●							
公 東大阪アリーナ	中小阪4-7-60	○	○	○						Tue
キオイデンキ	上小阪2-4-1	○								Sun/Holiday
ラッキー長瀬店	菱屋西1-23-33							●	●	
エルデンキ	横沼町1-6-12	○	●							Sun/Holiday
ハヤデンやまいち	横沼町2-14-2	○								Sun/Holiday
カラスヤマデンキ永和店	永和2-17-15	○								Sun/Holiday
木下電機商会	永和3-13-19	○								Sun/Holiday
アヴェニューあさひ	友井1-3-8	○	●							Sun
富士商会	友井1-4-12	○	●							Thu
コノミヤ弥刀店	友井3-8-2						○	●	●	
食品館アプロ友井店	友井5-1-10						○	●	●	
公 近江堂リジョンセンター(市民プラザ)	近江堂3-12-15	○	○	○	○					2 nd & 4 th Thu *
坂口電気商会	小若江1-3-17	○								Sun/Holiday
グルメシティ長瀬店	小若江2-8-31						○	●	●	
イイダデンキ	小若江2-13-2	○								Wed
コノミヤ大蓮東店	大蓮東4-6-7						○	●	●	
西川電気商会	大蓮北2-21-5	○								Sun/Holiday
サンディ大蓮店	大蓮北3-22-3						○			
高木電器商会	衣摺1-7-8	○								Sun
辻本産業	衣摺1-11-16	○	●							Sat/Sun
ハラサキデンキ	衣摺4-10-13	○								Sun
イオテクノ	衣摺5-12-25	○								Sat/Sun/Holiday
公 長瀬人権文化センター	長瀬町3-4-3	○	○	○	○					Sun/Holiday
公 西部環境事業所	渋川町2-12-8	○	○			○	○			Sat/Sun
おおにしでんき	寿町3-11-3	○								Sun/Holiday
電化ショップ・サカモト	足代3-8-13	○								Sun/Holiday
ストーク布施	荒川12-17-14	○								Sun/Holiday
ソニーショップドーム	荒川12-27-9	○	●							Thu
ライフ太平寺店	太平寺2-10-19				○					

公・・・Public facilities ○・・・Collected by city related organization ●・・・Collected by each (As of February, 2022)

*Opens if falls on holiday and closed on the following day.

Name of store	Address	Fluorescent tubes	Batteries Batteries rechargeable	Small electric appliance Small rechargeable	Papers	PET bottle	White tray	Paper packs	Closed day
Central area									
ヨシオカ電器	加納2-19-2	○							Mon
中村電器加納店	加納7-3-10	○							Sun
中尾電気商会	今米2-2-5	○	●						Sun
公 角田総合老人センター	角田2-3-8	○	○	○					Sun/Holiday
C&Cエンド東大阪店	中野1-1-2					○			
丸山電器商会	松原2-6-29	○							Sun/Holiday
公 花園図書館	吉田4-7-20			○					Tue
近商ストア東花園店	吉田6-9-13					○	●	●	
エイデン	吉田8-7-9	○	●						Sun
カラスヤマデンキ	稲葉3-4-16	○							Thu/ 3 rd Sun
アイオイ電機花園店	花園東町2-5-31	○							Thu/ 3 rd Sun
ライフ玉串店	玉串町東1-6-20			○		○	●	●	
サンディ若江東町店	若江東町4-4-8					○			
じゃんぼ食鮮館花園店	花園本町1-6-7					○			
片岡電気	花園東町1-5-6		●						Sun/Holiday
コノミヤ若江岩田店	岩田町3-9-1					○	●	●	
フレッシュシンワ	岩田町3-10-5					○	●	●	
公 若江岩田駅前リゾーションセンター(市民プラザ)	岩田町4-3-22 希来里施設棟5階	○	○	○	○				2 nd & 4 th Wed *
中山電気店	岩田町5-2-15	○							Sun
しのはらでんき	岩田町5-21-18	○							Wed
公 美化推進課	岩田町6-1-1	○	○						Sat/Sun/Holiday
菊沢電器若江岩田店	若江本町1-4-16	○							Sun/Holiday
渡辺電気商会	瓜生堂2-1-56	○	●						Sun
ニトリモール東大阪	西岩田2-3-25			○					
スズキデンキ	南鴻池町2-13-24	○							Sun/Holiday
広永電器商会	新庄2-8-4	○	●						Thu
イオン鴻池店	鴻池町1-1-72		●			○	●	●	
イオンタウン東大阪(マックスバリュ東鴻池店)	東鴻池町1-6-30			○					
モリタ屋鴻池店	鴻池元町2-2					○	●	●	
ライト電機鴻池店	鴻池元町10-4	○							Thu
ラッキー鴻池店	鴻池元町11-7					○	●	●	
公 中鴻池リゾーションセンター(市民プラザ)	中鴻池町2-3-13	○	○	○	○				1 st & 3 rd Thu *
公 中部環境事業所	菱江2-1-12	○	○		○	○			Sat/Sun
ライフ菱江店	中野南1-71					○	●	●	
ホームセンターコーナン東大阪菱江店	中野南1-71		●	○					
Eastern area									
公 日下リゾーションセンター(市民プラザ)	日下町3-1-7	○	○	○	○				2 nd & 4 th Thu *
関西スーパー日下店	日下町4-2-67					●	●	●	
イトウ電化(布市)	布市町1-6-32	○							
正電	布市町2-6-27	○	●						Sun/Holiday
ドン・キホーテ パウ石切店	西石切町7-3-46					○			
じゃんぼ食鮮館石切店	中石切町4-3-2					○	●	●	
公 東部環境事業所	中石切町6-3-52	○	○		○	○			Sat/Sun
枚岡電化	立花町1-21	○							Mon/3 rd Sun
ニューケイマート額田駅前店	立花町16-13					○	●		
ホームセンターコーナン外環新石切店	弥生町16-12		●	○					
月星電化	鳥居町10-7	○							Thu
公 東体育館	鷹殿町1-2	○	○	○					Mon*
岡本電器	鷹殿町4-19	○							Wed
マックスバリュ瓢箪山店	喜里川町2-22					○	●	●	
公 五条老人センター	五条町9-45	○	○	○					Sun/Holiday
フレスコ瓢箪山店	本町6-13					○	●	●	
クスマ電器	本町15-7	○	●						Mon
松井デンキ店	瓢箪山町1-21	○							Mon
イオンフードスタイル瓢箪山店	瓢箪山町4-24					○	●	●	
アサダホーム設備	四条町6-3	○	●						Sun/Holiday
エレック・イダ	四条町9-15	○							Sun
公 四条リゾーションセンター(市民プラザ)	南四条町1-7	○	○	○	○				1 st & 3 rd Wed *
タケタニ電器	御幸町3-4	○							Wed/ 3 rd Thu
きのしたでんき(パナットきのした)	神田町3-6	○	●						Bon, New year period/ Holiday
太陽エネルギー	六万寺町1-1-27	○							Sun
中岸商事	横小路町3-3-8	○							Sun/Holiday
石垣電器	新池島町2-6-30								Sun/Holiday
富士商会花園店	新池島町2-8-25	○							Thu/ 3 rd Sun

List of designated collection site and cooperative stores

公・・・Public facilities ○・・・Collected by city related organization ●・・・Collected by each store *If falls on holiday, closed on the following day. (As of February, 2022)

- A large amount of garbage at one time may not be accepted.
- Please dispose the item listed above in the designated collection box during the business days and hours of each facility or store.
- Please note that the items handled by each facility or store and the days they are closed are subject to change.

LIST OF CONTACT

Type of garbage	Description	Office in charge and address	Phone/Fax
Household garbage, cans & bottles, small unburnable items and small dead animals	About garbage collection *Office varies depending on the area Please refer to P. 17~20	Tobu Kankyo Jigyosho 6-3-52 Naka-ishikiri-cho, Higashiosaka	TEL. 072-984-8005 FAX. 072-984-6519
		Chubu Kankyo Jigyosho 2-1-12 Hishie, Higashiosaka	TEL. 072-963-3210 FAX. 072-966-6355
		Seibu Kankyo Jigyosho 2-12-8 Shibukawa-cho, Higashiosaka	TEL. 06-6722-2994 FAX. 06-6727-9423
		Hokubu Kankyo Jigyosho 2-1-16 Nishi-zutsumi-hondori-nishi, Higashiosaka	TEL. 06-6789-1851 FAX. 06-6789-9044
	Garbage collection of housing complex consisted of more than 50 apartments	Tobu Kankyo Jigyosho 6-3-52 Naka-ishikiri-cho, Higashiosaka	TEL. 072-984-8005 FAX. 072-984-6519
	About garbage disposing method	Kankyo Jigyoka 1-1-1 Aramoto-kita, Higashiosaka	TEL. 06-4309-3200 FAX. 06-4309-3829
Plastic containers and packages, and PET bottles	About collection	Chubu Kankyo Jigyosho 2-1-12 Hishie, Higashiosaka	TEL. 072-963-3210 FAX. 072-966-6355
	About recyclable garbage collection site	Hokubu Kankyo Jigyosho 2-1-16 Nishi-zutsumi-hondori-nishi, Higashiosaka	TEL. 06-6789-1851 FAX. 06-6789-9044
Small electric home appliance, waste papers, waste fluorescent tubes and batteries, mercury clinical thermometer and blood pressure apparatus, etc.	About disposing method	Junkan Shakai Suishinka 1-1-1 Aramoto-kita, Higashiosaka	TEL. 06-4309-3199 FAX. 06-4309-3829
Home PCs	About recycling	Rennet Japan Recycle Co., Ltd.	TEL 0570-085-800
Large-sized waste	For appointment	Call Center Business hours: Sun. ~ Fri. including holiday 9:00~17:00	TEL. 072-962-5374 FAX. 072-962-1673 (*)
	About collection	Seibu Kankyo Jigyosho 2-12-8 Shibukawa-cho, Higashiosaka	TEL. 06-6722-2994 FAX. 06-6727-9423
Items subject to "Home appliance recycling law" Air-conditioners, TV's, refrigerators, freezers, washing machines and clothes dryers	Authorized agency in case of bring-in	Nihon-tsu-un Ltd. Osaka-higashi branch Tobu Osaka office 3-2-24 Yakeno, Tsurumi-ku, Osaka Available hours: Mon.~Sat. except Sun. & holiday 9:00~12:00/13:00~17:00	TEL 06-6911-3892 FAX 06-6911-1154
		Nihon-tsu-un Ltd. Osaka-minami branch Yao warehouse 2-24 Jinmu-cho, Yao Available hours: Mon.~Sat. except Sun. & holiday 9:00~12:00/13:00~17:00	TEL 072-991-2957 FAX 072-991-5303
	Contact in case of asking for pick-up	Higashiosaka Cooperative for Cleaning Business (Higashiosaka Seiso Jigyo Kyodo Kumiai) For appointment: Mon.~Fri. except holiday 9:00~15:00	TEL 06-6783-0053 FAX 06-6783-0011
	About home appliance recycling coupon	Home appliance recycling coupon center	TEL 0120-319-640
Others (Occasional and industrial waste)	In case of bring-in to the incineration plant by yourself	Higashiosaka Union of City Cleaning Facilities (Higashiosaka Toshi Seiso Shisetsu Kumiai) For appointment: Mon.~Fri except holiday 9:00~16:00	TEL 072-975-5341 (For appointment only) FAX 072-962-6125 (*)
	In case of asking authorized collector for pick-up	Higashiosaka Cooperative for Cleaning Business (Higashiosaka Seiso Jigyo Kyodo Kumiai) For appointment: Mon.~Fri. except holiday 9:00~15:00	TEL 06-6783-0053 FAX 06-6783-0011
	About illegal waste	Bika Suishin-ka 6-1-1 Iwata-cho, Higashiosaka	TEL 072-961-2100 FAX 072-961-2418

(*) For hearing and speech impaired