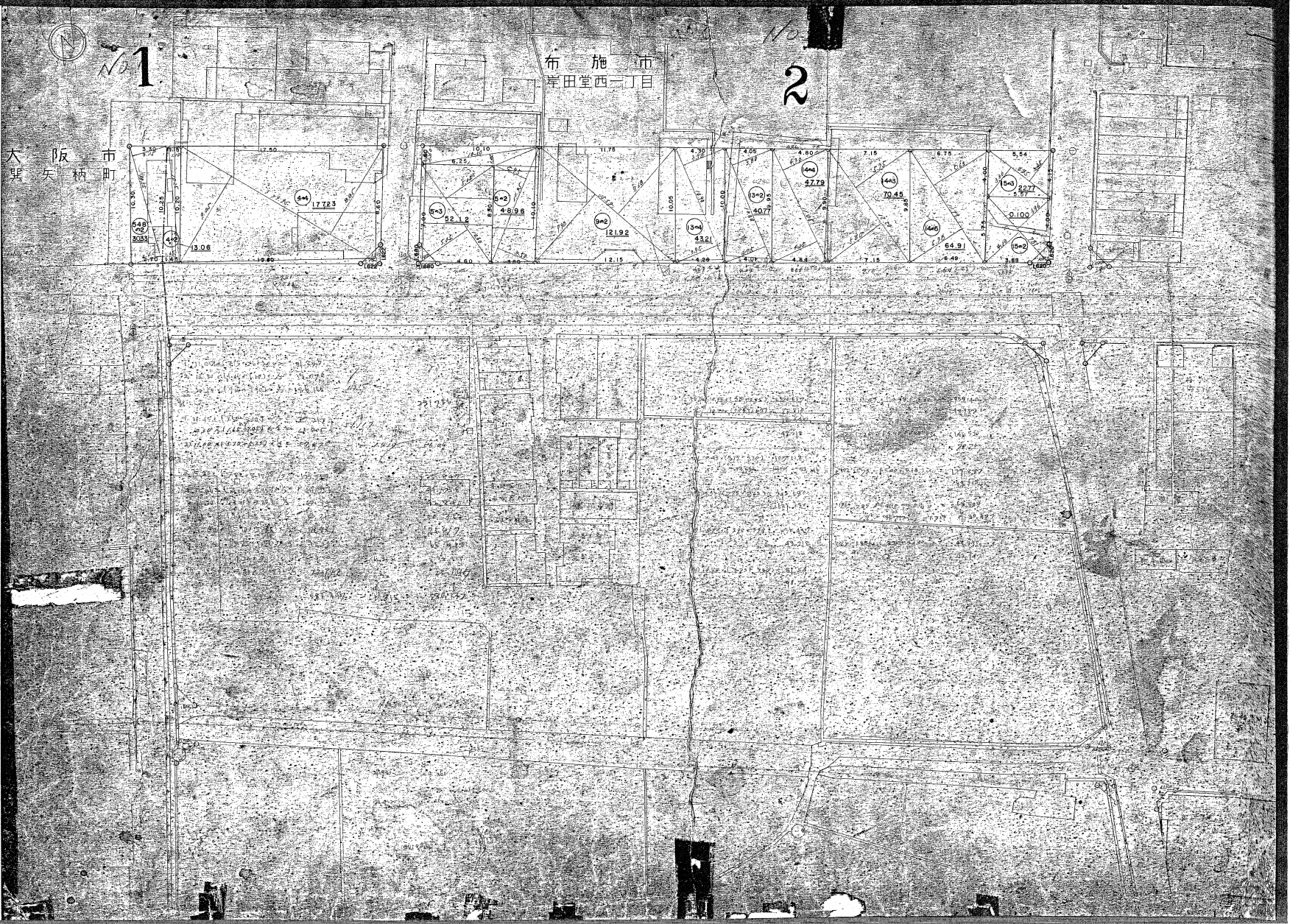


大坂市 大東区



大坂市 大東区

布施市 岸田堂西二丁目

No. 1

No. 2

17.723

92.12

45.98

12.92

43.21

40.77

27.73

70.45

22.77

5.97

0.100

64.91

5.49

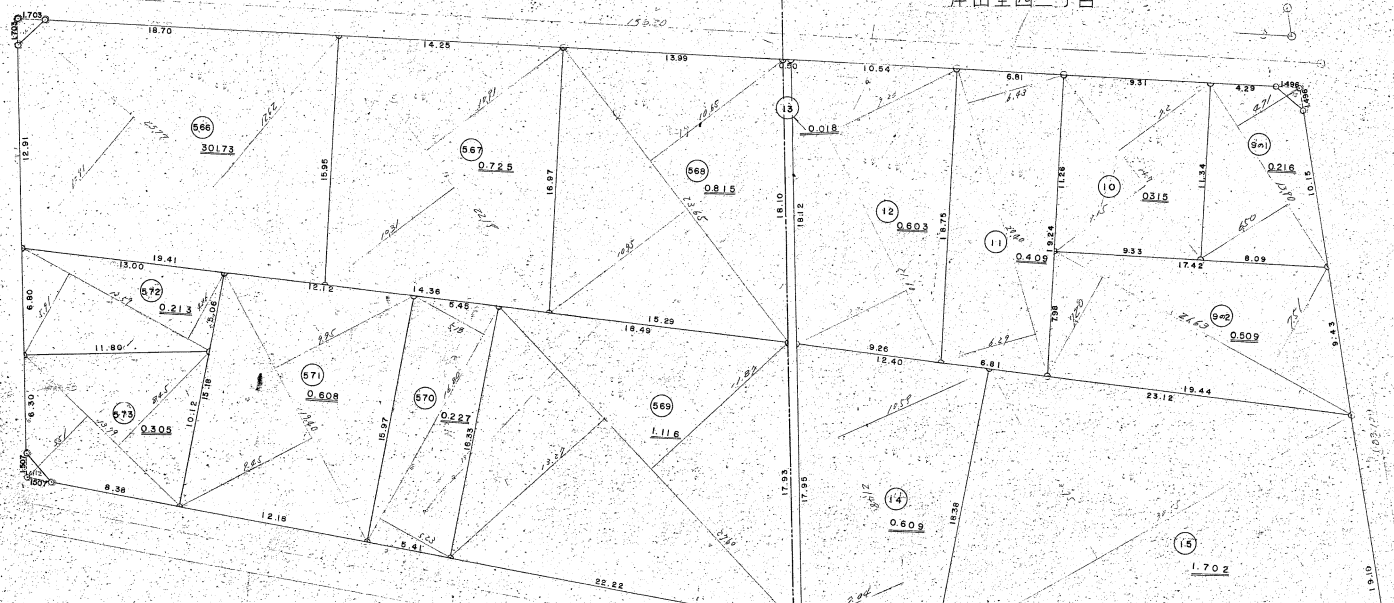
3.68

No. 4



大 阪 市
巽 矢 柄 町

布 施 市
岸 田 堂 西 二 丁 目



Parcel No.	Area (sq. m)	Area (sq. m)	Area (sq. m)
1	25.85 x 10.90 = 280.765	280.765	280.765
2	12.85 x 1.570 = 20.1745	20.1745	20.1745
3	12.85 x 1.250 = 16.0625	16.0625	16.0625
4	17.45 x 1.200 = 20.94	20.94	20.94
5	17.30 x 1.500 = 25.95	25.95	25.95
6	22.15 x 10.250 = 226.8375	226.8375	226.8375
7	22.65 x 10.950 = 247.8075	247.8075	247.8075
8	27.70 x 1.225 = 33.9225	33.9225	33.9225
9	21.55 x 1.250 = 26.9375	26.9375	26.9375
10	22.20 x 1.800 = 39.96	39.96	39.96
11	20.40 x 1.620 = 33.048	33.048	33.048
12	12.85 x 1.620 = 20.817	20.817	20.817
13	22.10 x 1.500 = 33.15	33.15	33.15
14	24.50 x 1.200 = 29.4	29.4	29.4
15	23.55 x 14.00 = 329.7	329.7	329.7

大阪府

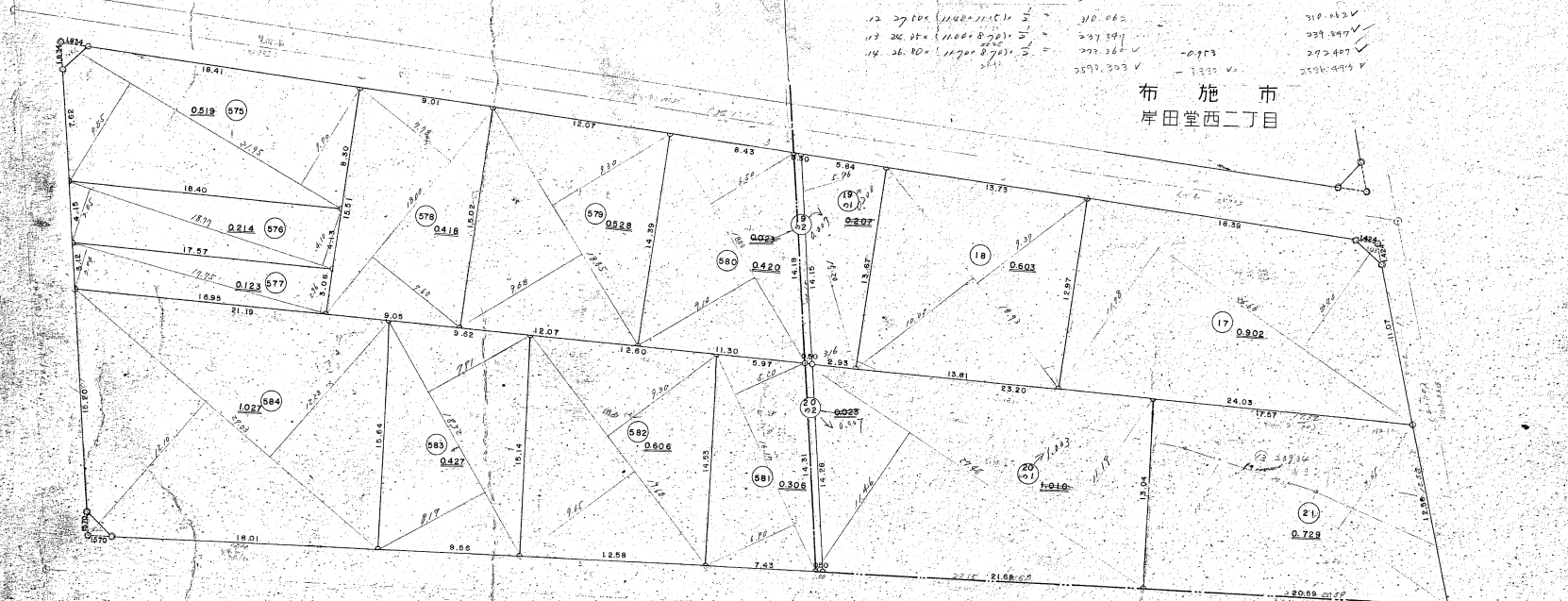
堺市

5



1	$21.31 \times (200 + 270) \div 2$	=	170.66	167.016
2	$18.60 \times (260 + 280) \div 2$	=	137.100	137.050
3	$18.95 \times (280 + 290) \div 2$	=	146.052	146.052
4	$25.00 \times (230 + 250) \div 2$	=	138.750	137.333
5	$18.25 \times (280 + 290) \div 2$	=	141.800	141.600
6	$17.51 \times (270 + 280) \div 2$	=	138.500	138.500
7	$22.85 \times (270 + 274) \div 2$	=	141.670	141.675
8	$17.85 \times (270 + 280) \div 2$	=	136.675	136.675
9	$16.20 \times (260 + 280) \div 2$	=	125.800	125.800
10	$16.00 \times (250 + 260) \div 2$	=	142.870	142.870
11	$15.15 \times (270 + 280) \div 2$	=	137.550	137.550
12	$18.95 \times (260 + 280) \div 2$	=	184.288	184.288
13	$27.00 \times (1000 + 1150) \div 2$	=	310.000	310.000
14	$26.40 \times (1100 + 870) \div 2$	=	237.340	237.340
15	$26.40 \times (1170 + 870) \div 2$	=	273.360	273.360
16	$26.40 \times (1170 + 870) \div 2$	=	259.303	259.303

布施市
岸田堂西二丁目



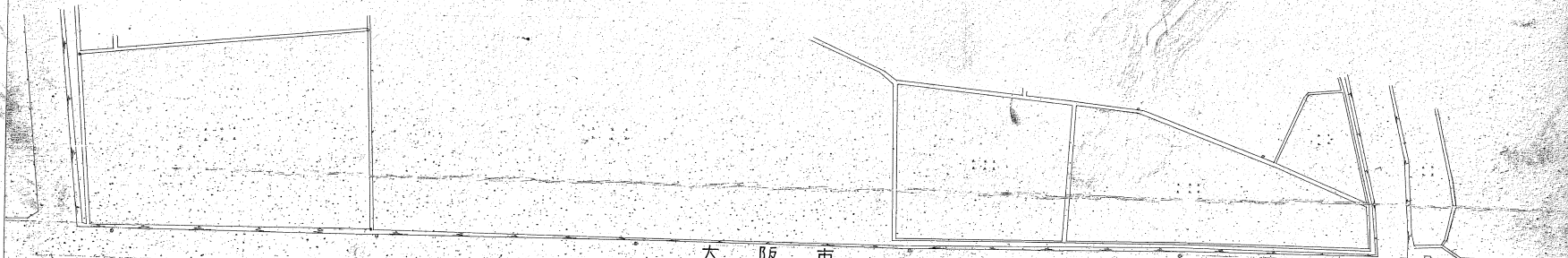
大阪市
巽矢柄町



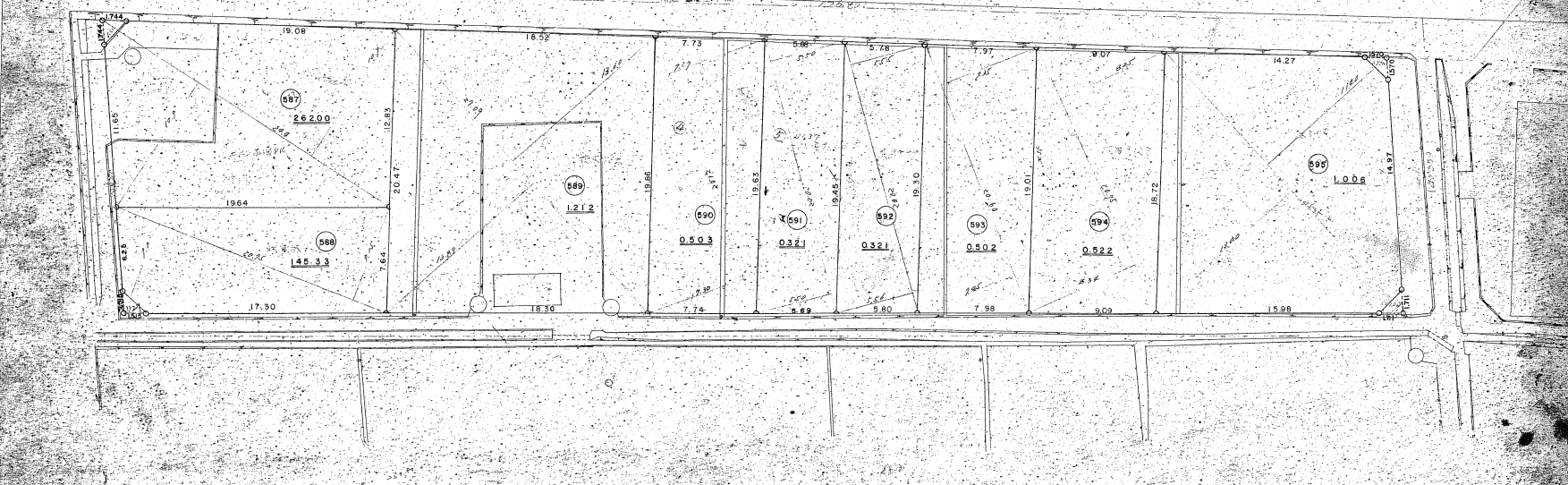
No 6

算式

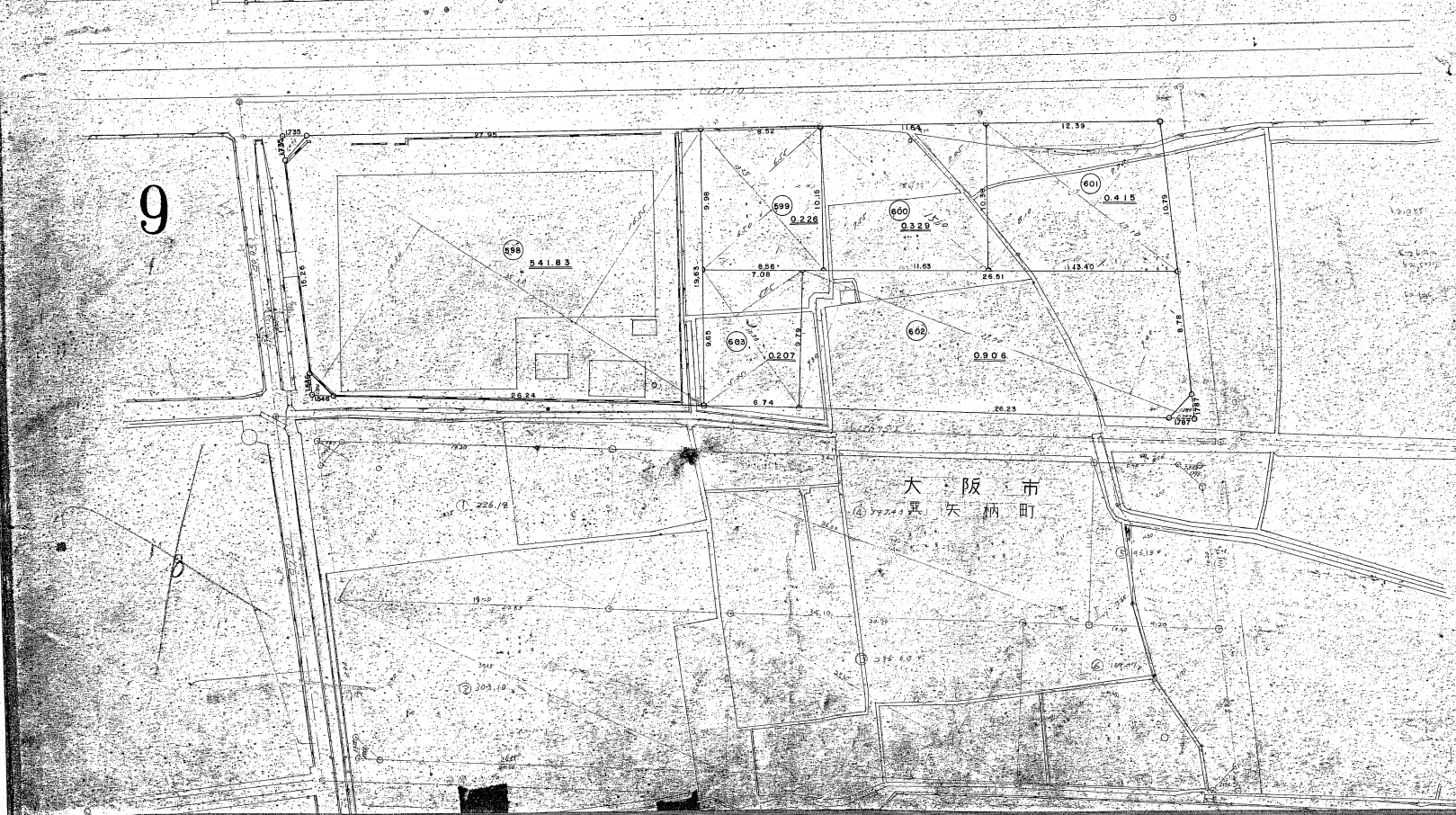
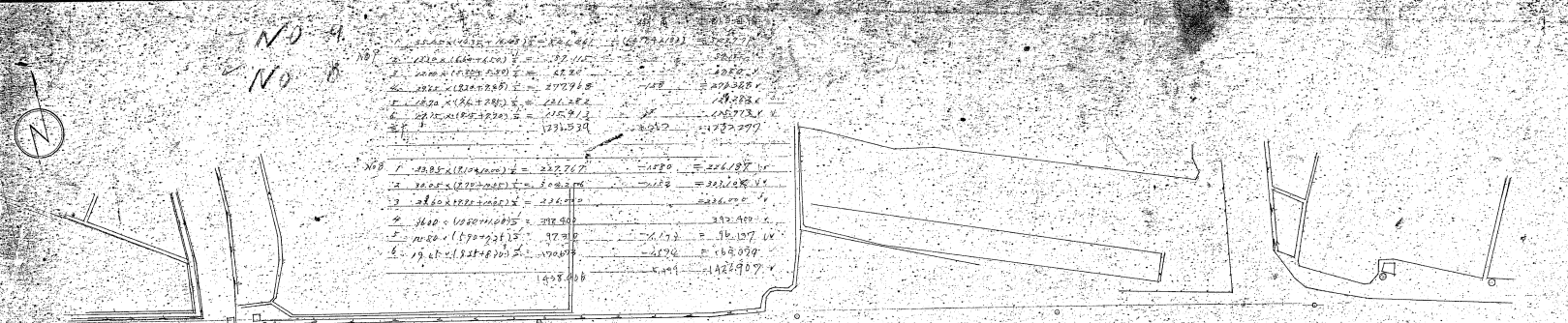
1. 21.00 × (16.25 - 10.20) ㎡	= 124.125	2. 20.25 × (6.50 - 2.15) ㎡	= 88.5375	3. 27.10 × (16.00 - 12.60) ㎡	= 901.140	4. 21.05 × (7.90 - 7.25) ㎡	= 153.188	5. 20.25 × (5.50 - 5.50) ㎡	= 0.000	6. 20.10 × (5.55 - 5.50) ㎡	= 111.0525	7. 20.60 × (7.45 - 7.35) ㎡	= 152.440	8. 20.90 × (8.20 - 8.20) ㎡	= 0.000	9. 25.25 × (1.305 - 1.145) ㎡	= 41.0375
合計			1,310.380	2,226.460			307.851			172.425			192.147				



大阪市
箕谷柄町



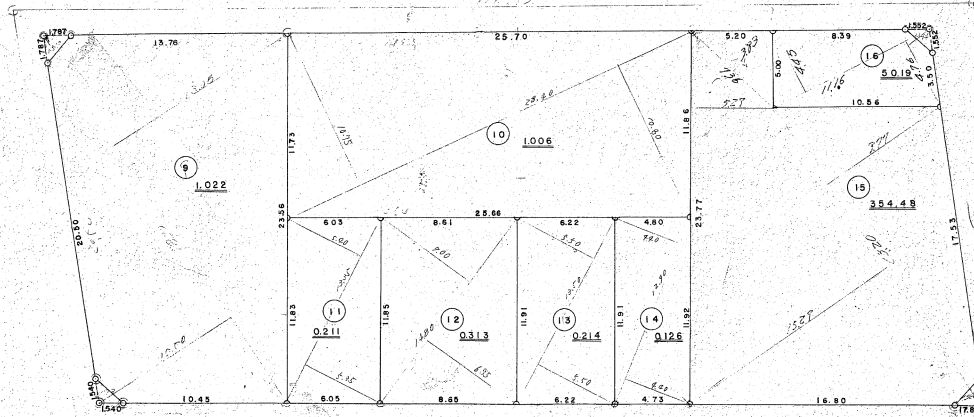
(KTAPX6)





19

布 施 市
寿 町



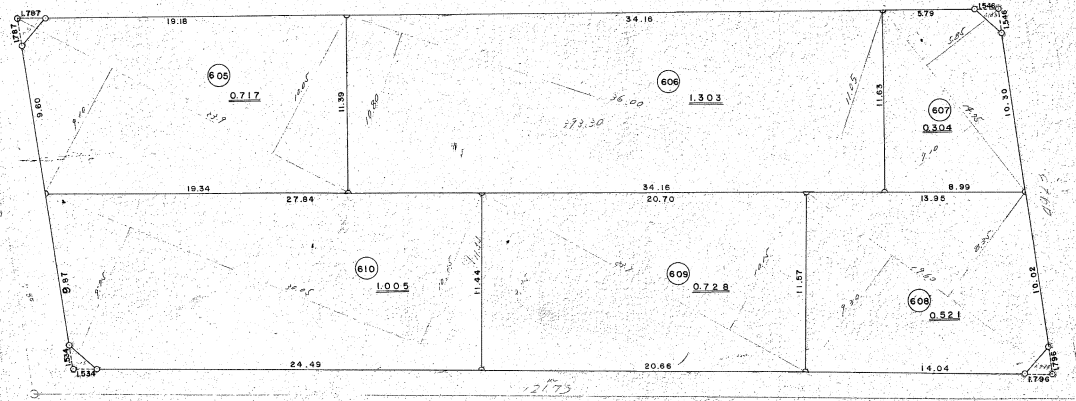
1. $3035 \times (1210 + 1475) = 814897$
- $\frac{1}{2} = 407448.5 - 2774 = 404674$
2. $34.95 \times (1740 + 1765) = 1224797$
- $\frac{1}{2} = 612398$
3. $2820 \times (1000 + 1005) = 650010$
- $\frac{1}{2} = 325005 - 2753 = 322252$

布 施 市
寿 町

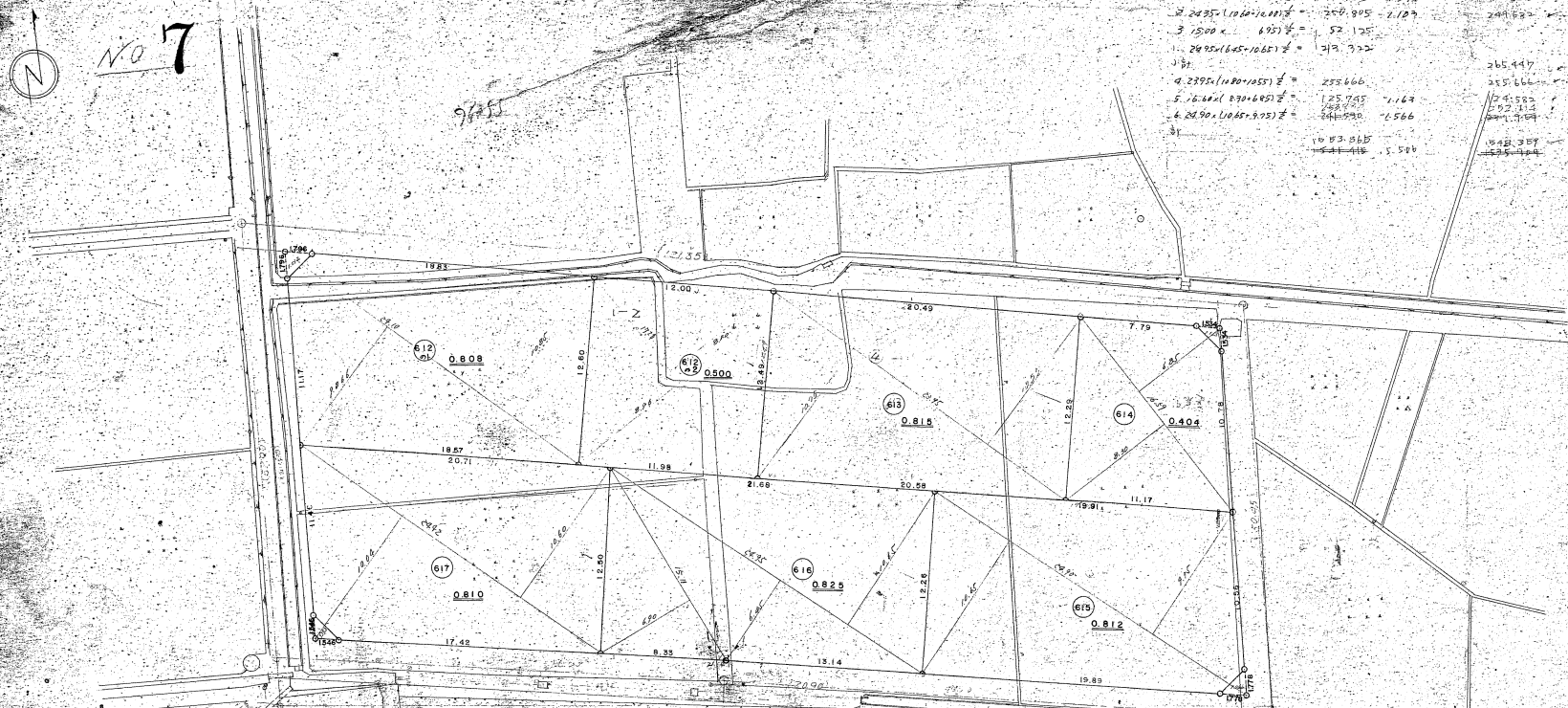
1. $2325 \times (95 + 280) = 135125$
- $\frac{1}{2} = 22712.5 - 1380 = 22574.5$
2. $3077 \times (1005 + 975) = 609000$
- $\frac{1}{2} = 304500 - 1160 = 303340$
3. $2367 \times (275 + 1010) = 273180$
- $\frac{1}{2} = 236590$
4. $3600 \times (1282 + 1100) = 781600$
- $\frac{1}{2} = 390800$
5. $1275 \times (500 + 710) = 192225$
- $\frac{1}{2} = 96112.5 - 183 = 95929.5$
6. $1000 \times (235 + 235) = 34594$
- $\frac{1}{2} = 17297 - 1395 = 15902$

8

大 阪 市
巽 矢 柄 町



No 7



1. 2490 x (1125+1100) ÷ 2 =	402.720	1.579	630.628
2. 2490 x (1060+1000) ÷ 2 =	260.905	1.107	299.822
3. 1500 x 695 ÷ 2 =	52.125		
4. 2490 x (1065+1065) ÷ 2 =	261.720		
5. 2490 x (1080+1055) ÷ 2 =	255.666		265.447
6. 10.00 x (170+165) ÷ 2 =	125.750	1.164	144.552
7. 2490 x (1065+975) ÷ 2 =	244.500	2.566	272.115
8. 10.00 x (165+165) ÷ 2 =	165.000		171.909
9. 10.00 x (165+165) ÷ 2 =	165.000		171.909
10. 10.00 x (165+165) ÷ 2 =	165.000		171.909
11. 10.00 x (165+165) ÷ 2 =	165.000		171.909
12. 10.00 x (165+165) ÷ 2 =	165.000		171.909
13. 10.00 x (165+165) ÷ 2 =	165.000		171.909
14. 10.00 x (165+165) ÷ 2 =	165.000		171.909
15. 10.00 x (165+165) ÷ 2 =	165.000		171.909
16. 10.00 x (165+165) ÷ 2 =	165.000		171.909
17. 10.00 x (165+165) ÷ 2 =	165.000		171.909
18. 10.00 x (165+165) ÷ 2 =	165.000		171.909
19. 10.00 x (165+165) ÷ 2 =	165.000		171.909
20. 10.00 x (165+165) ÷ 2 =	165.000		171.909
21. 10.00 x (165+165) ÷ 2 =	165.000		171.909
22. 10.00 x (165+165) ÷ 2 =	165.000		171.909
23. 10.00 x (165+165) ÷ 2 =	165.000		171.909
24. 10.00 x (165+165) ÷ 2 =	165.000		171.909
25. 10.00 x (165+165) ÷ 2 =	165.000		171.909
26. 10.00 x (165+165) ÷ 2 =	165.000		171.909
27. 10.00 x (165+165) ÷ 2 =	165.000		171.909
28. 10.00 x (165+165) ÷ 2 =	165.000		171.909
29. 10.00 x (165+165) ÷ 2 =	165.000		171.909
30. 10.00 x (165+165) ÷ 2 =	165.000		171.909

大阪市
巽矢柄町

224.119
233.119



25

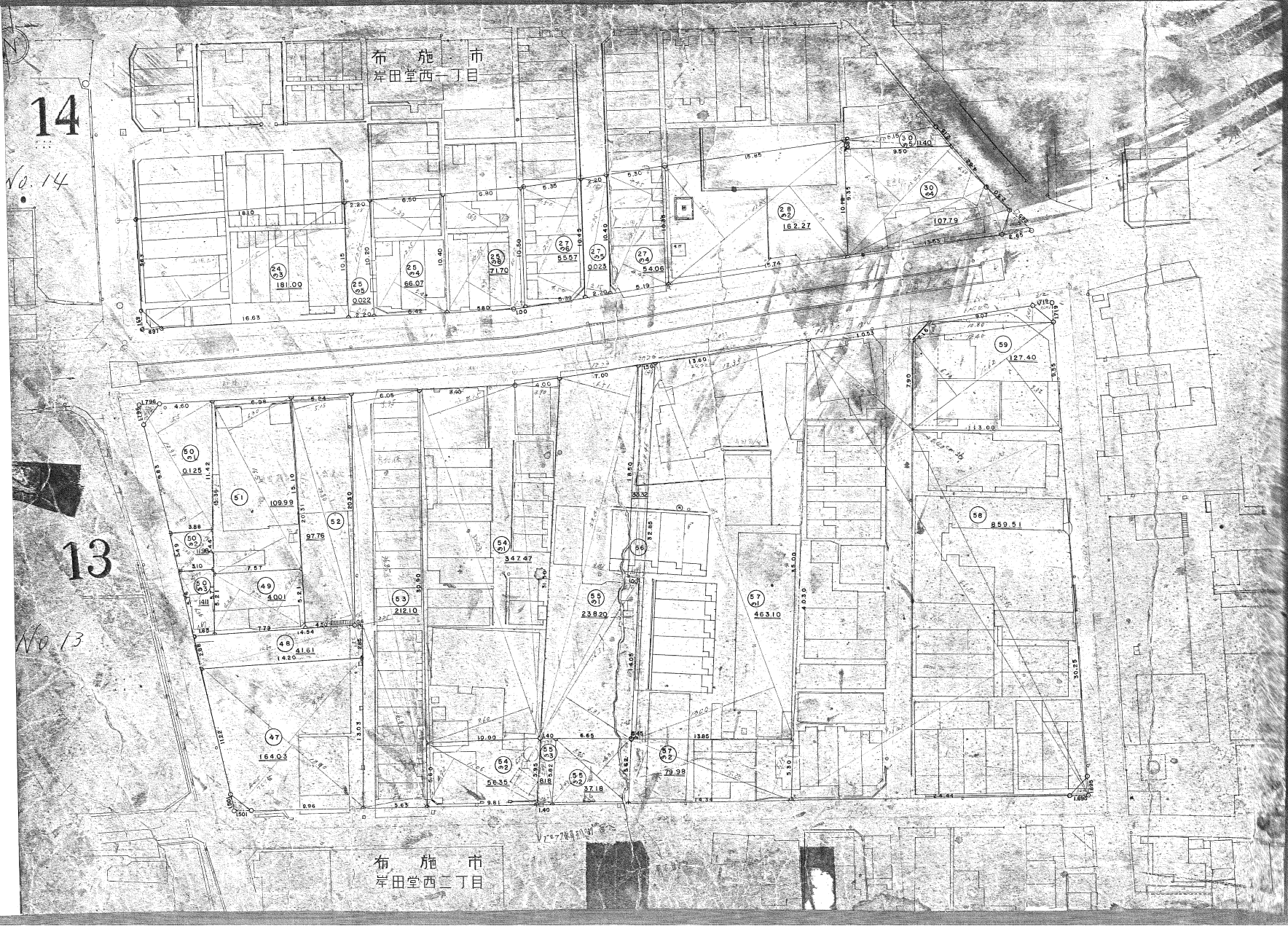
1	16.167	16.167	16.167
2	16.167	16.167	16.167
3	16.167	16.167	16.167
4	16.167	16.167	16.167
5	16.167	16.167	16.167
6	16.167	16.167	16.167
7	16.167	16.167	16.167
8	16.167	16.167	16.167
9	16.167	16.167	16.167
10	16.167	16.167	16.167
11	16.167	16.167	16.167
12	16.167	16.167	16.167
13	16.167	16.167	16.167
14	16.167	16.167	16.167
15	16.167	16.167	16.167
16	16.167	16.167	16.167
17	16.167	16.167	16.167
18	16.167	16.167	16.167
19	16.167	16.167	16.167
20	16.167	16.167	16.167
21	16.167	16.167	16.167
22	16.167	16.167	16.167
23	16.167	16.167	16.167
24	16.167	16.167	16.167
25	16.167	16.167	16.167

① 16.167 (16.167) = 26.9
 ② 16.167 (16.167) = 21.37
 ③ 16.167 (16.167) = 8.78
 ④ 16.167 (16.167) = 15.731
 ⑤ 16.167 (16.167) = 15.466

25

布施市





14

No. 14

13

No. 13

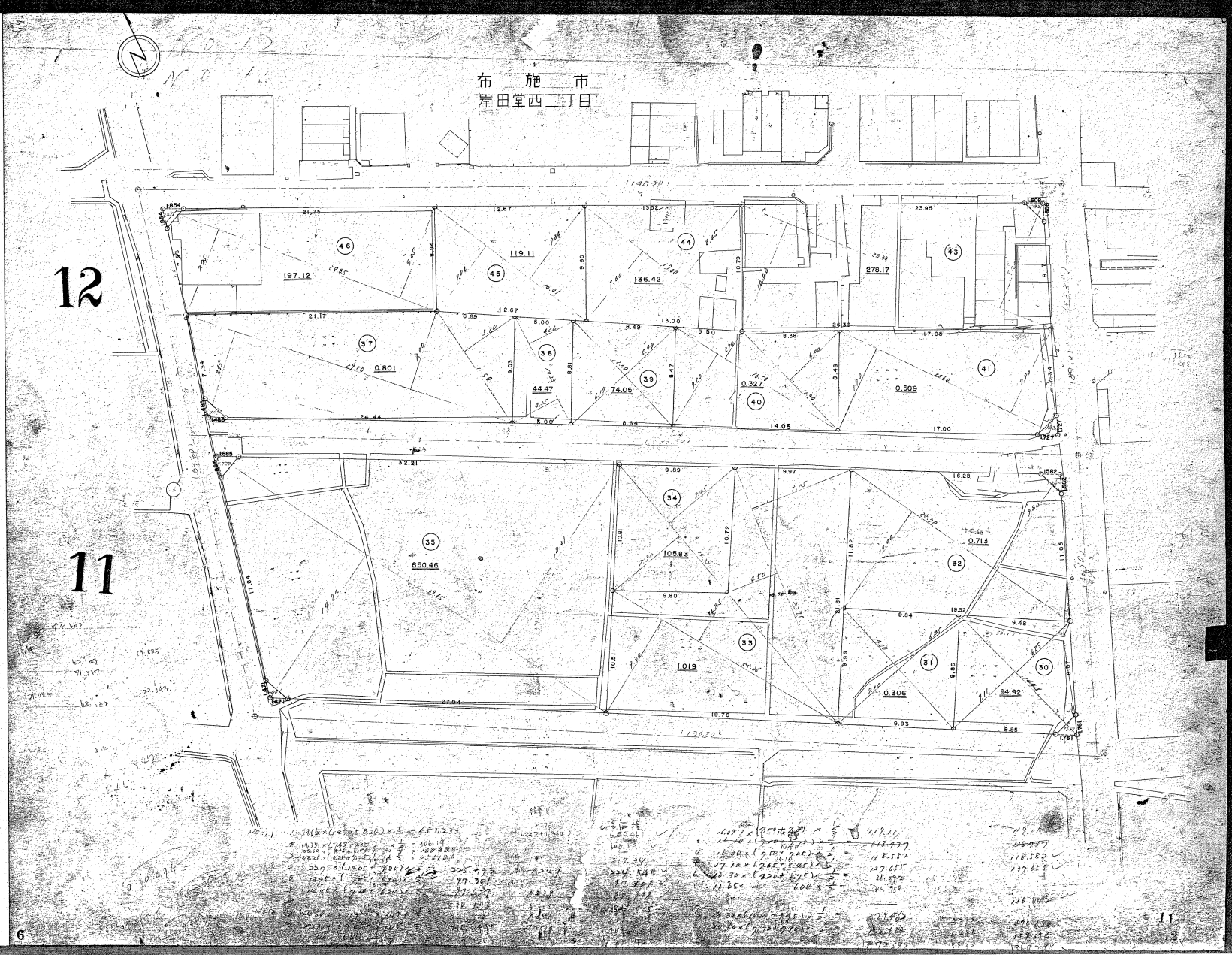
布施市
岸田堂西一丁目

布施市
岸田堂西二丁目

布施市
岸田堂西二丁目

12

11



11	118.11	118.11	118.11
12	118.11	118.11	118.11
13	118.11	118.11	118.11
14	118.11	118.11	118.11
15	118.11	118.11	118.11
16	118.11	118.11	118.11
17	118.11	118.11	118.11
18	118.11	118.11	118.11
19	118.11	118.11	118.11
20	118.11	118.11	118.11
21	118.11	118.11	118.11
22	118.11	118.11	118.11
23	118.11	118.11	118.11
24	118.11	118.11	118.11
25	118.11	118.11	118.11
26	118.11	118.11	118.11
27	118.11	118.11	118.11
28	118.11	118.11	118.11
29	118.11	118.11	118.11
30	118.11	118.11	118.11
31	118.11	118.11	118.11
32	118.11	118.11	118.11
33	118.11	118.11	118.11
34	118.11	118.11	118.11
35	118.11	118.11	118.11
36	118.11	118.11	118.11
37	118.11	118.11	118.11
38	118.11	118.11	118.11
39	118.11	118.11	118.11
40	118.11	118.11	118.11
41	118.11	118.11	118.11
42	118.11	118.11	118.11
43	118.11	118.11	118.11
44	118.11	118.11	118.11
45	118.11	118.11	118.11
46	118.11	118.11	118.11

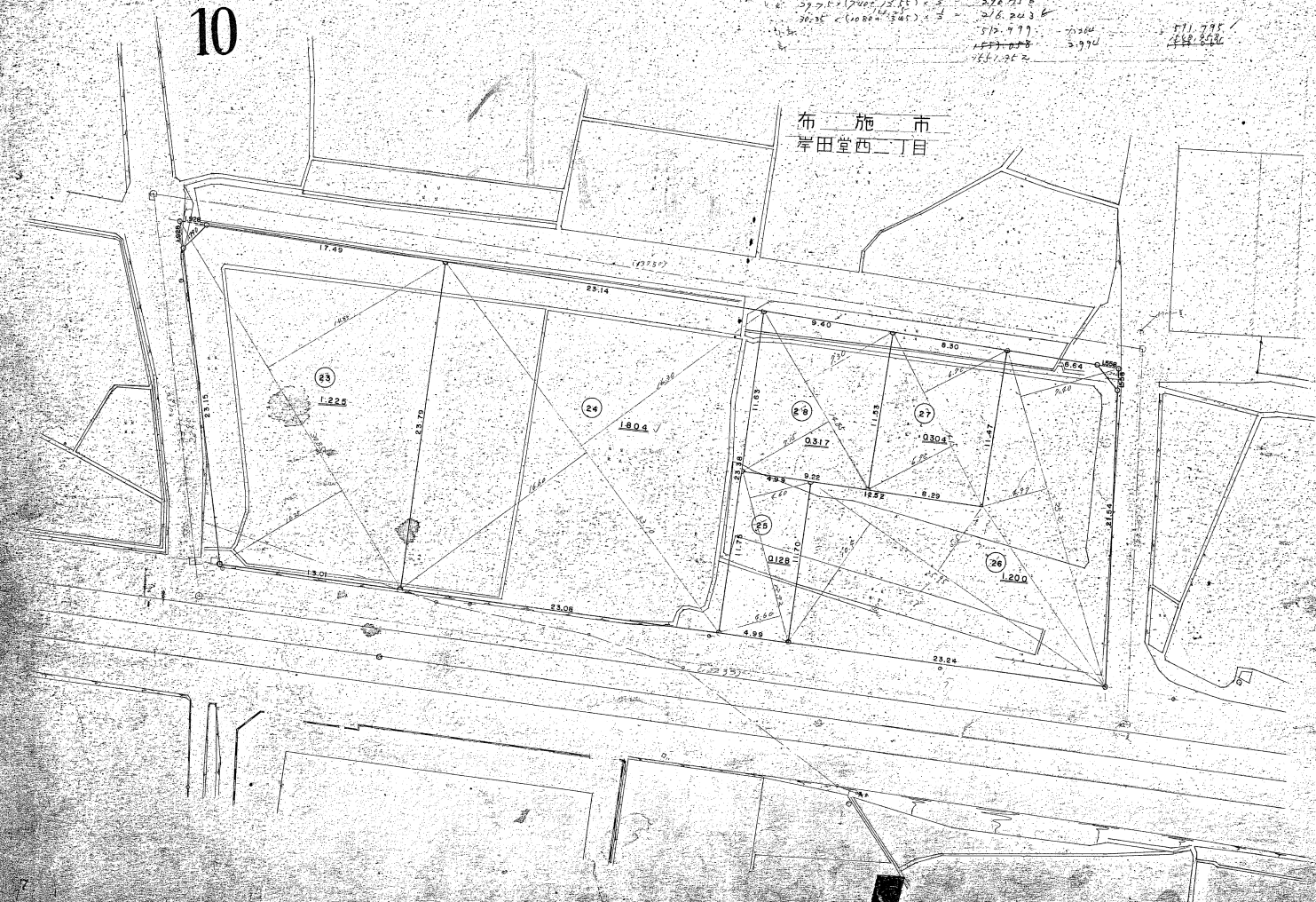


No 10

10

No	面積	割合	合計
1	302.467	17.70	302.467
2	524.487	30.15	826.954
3	226.377	13.12	1053.331
4	226.377	13.12	1279.708
5	226.377	13.12	1506.085
6	226.377	13.12	1732.462
7	226.377	13.12	1958.839
8	226.377	13.12	2185.216
9	226.377	13.12	2411.593
10	226.377	13.12	2637.970
11	226.377	13.12	2864.347
12	226.377	13.12	3090.724
13	226.377	13.12	3317.101
14	226.377	13.12	3543.478
15	226.377	13.12	3769.855
16	226.377	13.12	3996.232
17	226.377	13.12	4222.609
18	226.377	13.12	4448.986
19	226.377	13.12	4675.363
20	226.377	13.12	4901.740
21	226.377	13.12	5128.117
22	226.377	13.12	5354.494
23	226.377	13.12	5580.871
24	226.377	13.12	5807.248
25	226.377	13.12	6033.625
26	226.377	13.12	6260.002
27	226.377	13.12	6486.379
28	226.377	13.12	6712.756
29	226.377	13.12	6939.133
30	226.377	13.12	7165.510
31	226.377	13.12	7391.887
32	226.377	13.12	7618.264
33	226.377	13.12	7844.641
34	226.377	13.12	8071.018
35	226.377	13.12	8297.395
36	226.377	13.12	8523.772
37	226.377	13.12	8750.149
38	226.377	13.12	8976.526
39	226.377	13.12	9202.903
40	226.377	13.12	9429.280
41	226.377	13.12	9655.657
42	226.377	13.12	9882.034
43	226.377	13.12	10108.411
44	226.377	13.12	10334.788
45	226.377	13.12	10561.165
46	226.377	13.12	10787.542
47	226.377	13.12	11013.919
48	226.377	13.12	11240.296
49	226.377	13.12	11466.673
50	226.377	13.12	11693.050
51	226.377	13.12	11919.427
52	226.377	13.12	12145.804
53	226.377	13.12	12372.181
54	226.377	13.12	12598.558
55	226.377	13.12	12824.935
56	226.377	13.12	13051.312
57	226.377	13.12	13277.689
58	226.377	13.12	13504.066
59	226.377	13.12	13730.443
60	226.377	13.12	13956.820
61	226.377	13.12	14183.197
62	226.377	13.12	14409.574
63	226.377	13.12	14635.951
64	226.377	13.12	14862.328
65	226.377	13.12	15088.705
66	226.377	13.12	15315.082
67	226.377	13.12	15541.459
68	226.377	13.12	15767.836
69	226.377	13.12	15994.213
70	226.377	13.12	16220.590
71	226.377	13.12	16446.967
72	226.377	13.12	16673.344
73	226.377	13.12	16899.721
74	226.377	13.12	17126.098
75	226.377	13.12	17352.475
76	226.377	13.12	17578.852
77	226.377	13.12	17805.229
78	226.377	13.12	18031.606
79	226.377	13.12	18257.983
80	226.377	13.12	18484.360
81	226.377	13.12	18710.737
82	226.377	13.12	18937.114
83	226.377	13.12	19163.491
84	226.377	13.12	19389.868
85	226.377	13.12	19616.245
86	226.377	13.12	19842.622
87	226.377	13.12	20068.999
88	226.377	13.12	20295.376
89	226.377	13.12	20521.753
90	226.377	13.12	20748.130
91	226.377	13.12	20974.507
92	226.377	13.12	21200.884
93	226.377	13.12	21427.261
94	226.377	13.12	21653.638
95	226.377	13.12	21880.015
96	226.377	13.12	22106.392
97	226.377	13.12	22332.769
98	226.377	13.12	22559.146
99	226.377	13.12	22785.523
100	226.377	13.12	23011.900

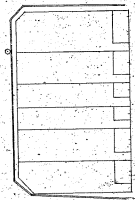
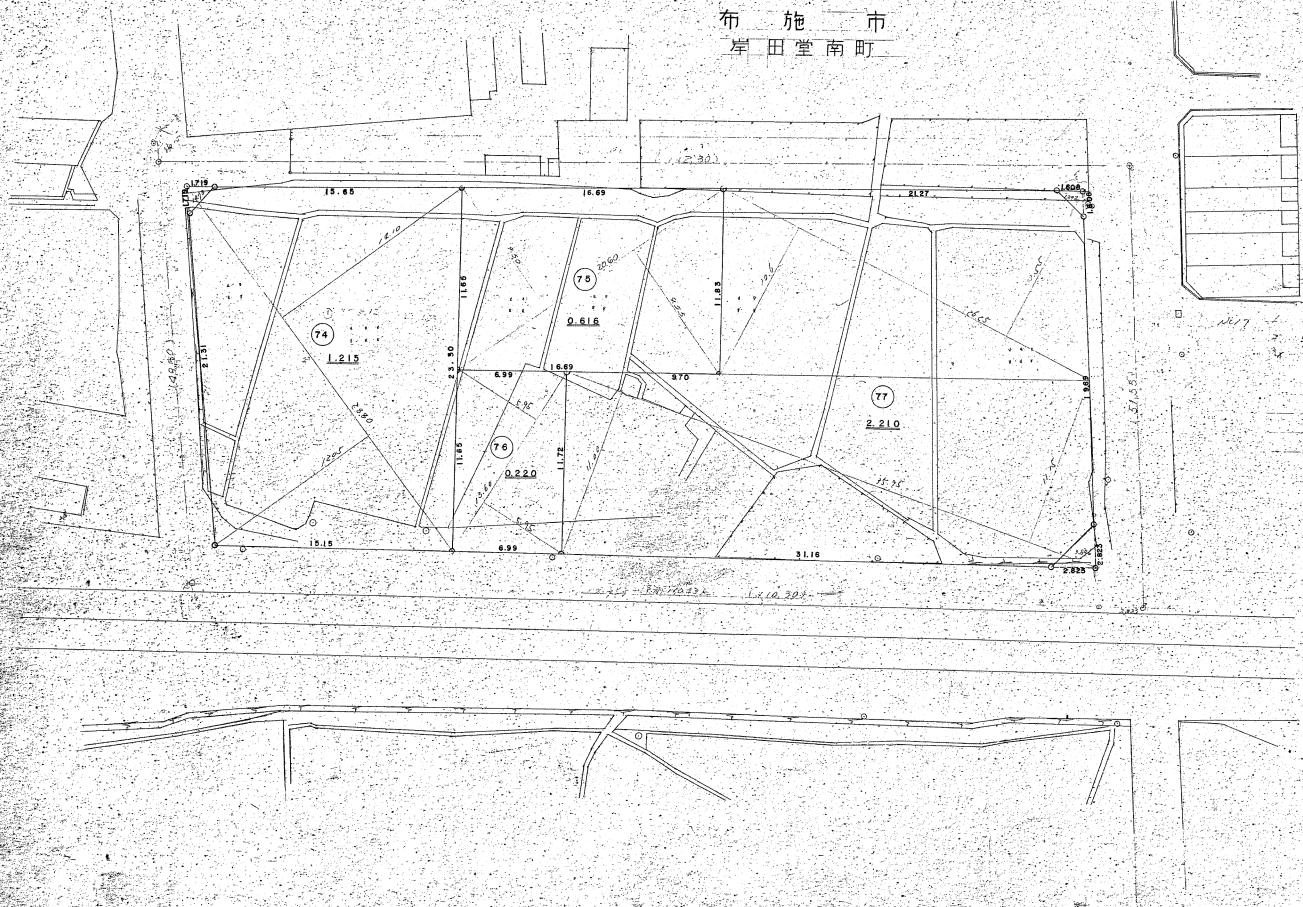
布施市
岸田堂西二丁目



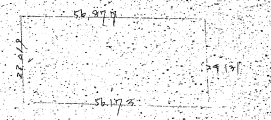


17

布施市
岸田堂南町



Handwritten calculations and notes:
 $20.80 \times (12.05 + 14.10) \div 2 = 274.84$
 $47.20 \times (20.25 + 20.35) \div 2 = 955.80$
 $11.32 \times 16.0 = 181.12$
 $6.20 \times 12.0 = 74.40$





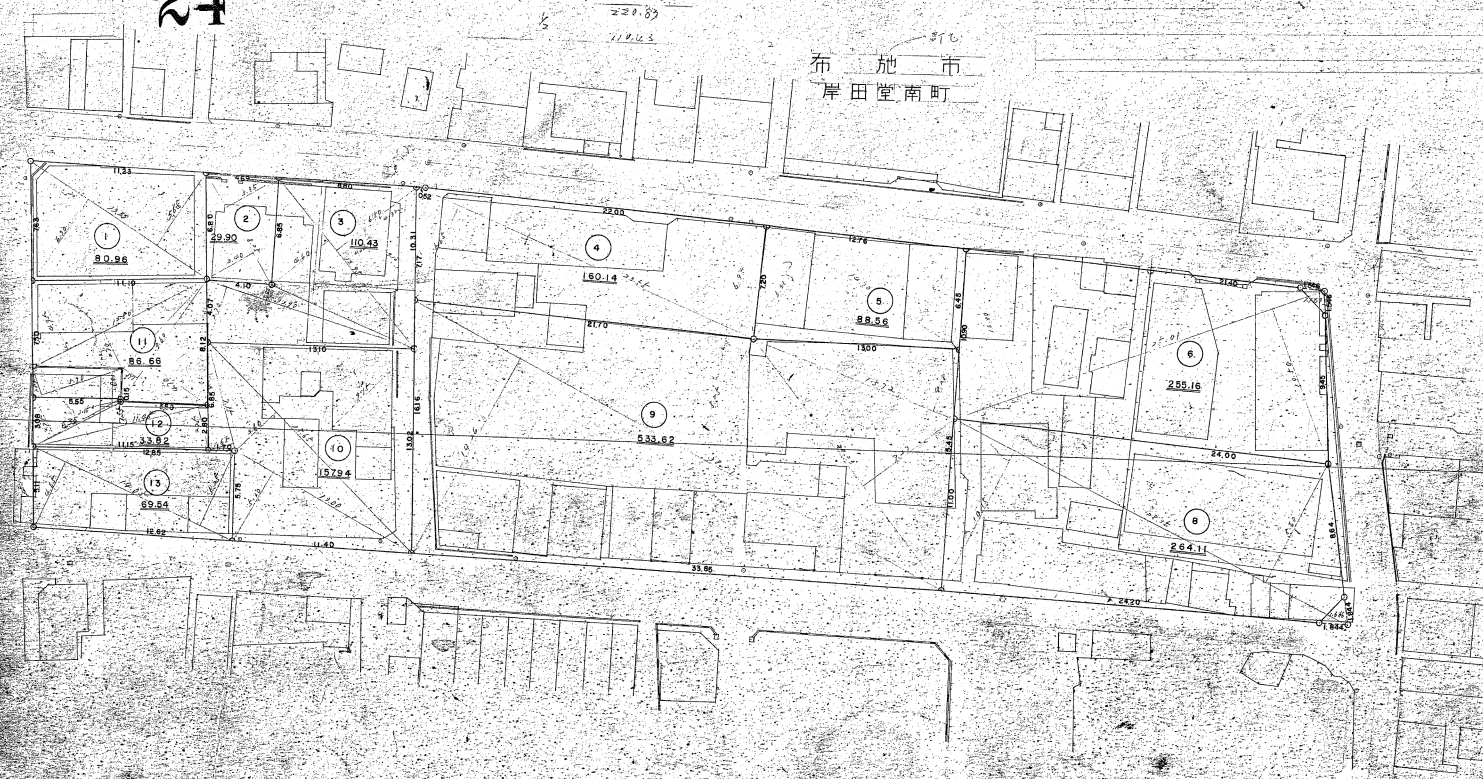
No. 34

1) $13.55 \times (1.05 + 1.61) = 38.927$	2) $14.10 \times (1.15 + 1.71) = 41.343$
3) $12.20 \times (1.15 + 1.71) = 35.116$	4) $11.80 \times (1.20 + 1.76) = 37.936$
5) $9.40 \times (1.15 + 1.71) = 27.135$	6) $12.00 \times 1.65 = 19.800$
7) 11.332	8) 31.747
9) 86.65	10) 158.72
11) $6.25 \times (2.15 + 1.15) = 18.413$	12) $8.55 \times (2.05 + 2.40) = 39.813$
12) $11.25 \times (1.15 + 1.71) = 32.735$	13) $13.35 \times (1.15 + 1.71) = 34.845$
13) 4.74	14) $13.90 \times (1.05 + 1.71) = 36.025$
14) 32.82	15) 228.83
	16) 112.45

24

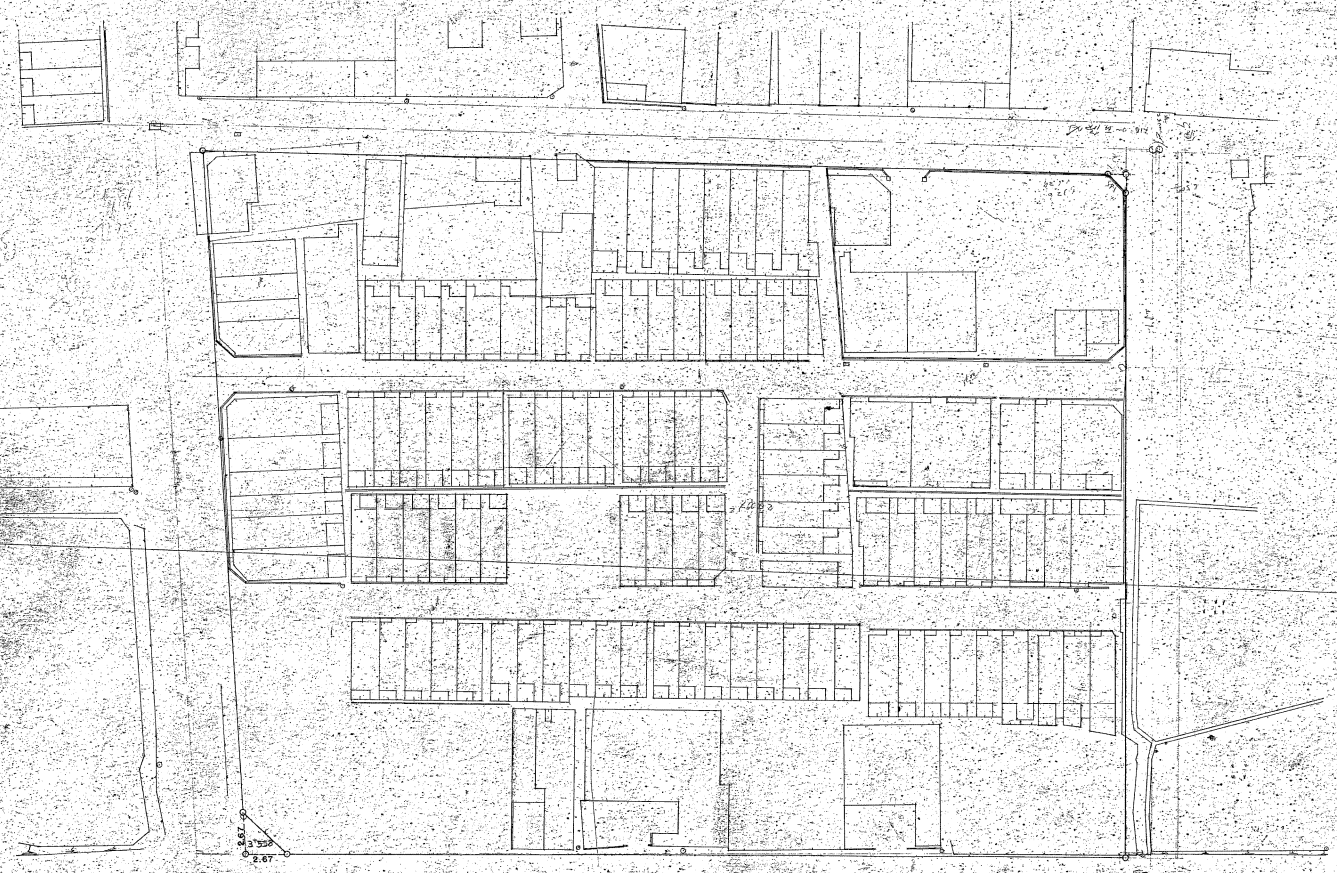
1) $13.55 \times (1.05 + 1.61) = 38.927$	2) $14.10 \times (1.15 + 1.71) = 41.343$
3) $12.20 \times (1.15 + 1.71) = 35.116$	4) $11.80 \times (1.20 + 1.76) = 37.936$
5) $9.40 \times (1.15 + 1.71) = 27.135$	6) $12.00 \times 1.65 = 19.800$
7) 11.332	8) 31.747
9) 86.65	10) 158.72
11) $6.25 \times (2.15 + 1.15) = 18.413$	12) $8.55 \times (2.05 + 2.40) = 39.813$
12) $11.25 \times (1.15 + 1.71) = 32.735$	13) $13.35 \times (1.15 + 1.71) = 34.845$
13) 4.74	14) $13.90 \times (1.05 + 1.71) = 36.025$
14) 32.82	15) 228.83
	16) 112.45

布 施 市
岸 田 堂 南 町





23



2.54
3.38
2.67



27

布施市
岸田堂南町



1000 x (200 x 200)	= 400,000	2000 x (200 x 200)	= 800,000
2000 x (200 x 200)	= 800,000	3000 x (200 x 200)	= 1,200,000
3000 x (200 x 200)	= 1,200,000	4000 x (200 x 200)	= 1,600,000
4000 x (200 x 200)	= 1,600,000	5000 x (200 x 200)	= 2,000,000
5000 x (200 x 200)	= 2,000,000	6000 x (200 x 200)	= 2,400,000
6000 x (200 x 200)	= 2,400,000	7000 x (200 x 200)	= 2,800,000
7000 x (200 x 200)	= 2,800,000	8000 x (200 x 200)	= 3,200,000
8000 x (200 x 200)	= 3,200,000	9000 x (200 x 200)	= 3,600,000
9000 x (200 x 200)	= 3,600,000	10000 x (200 x 200)	= 4,000,000

1/2500
1/5000
1/10000

33

布施市
岸田堂南町



①	12.25 x (105 - 200)	= 118.11	
②	12.25 x (105 - 200)	= 118.11	
③	12.25 x (105 - 200)	= 118.11	
④	12.25 x (105 - 200)	= 118.11	
⑤	12.25 x (105 - 200)	= 118.11	
⑥	12.25 x (105 - 200)	= 118.11	
⑦	12.25 x (105 - 200)	= 118.11	
⑧	12.25 x (105 - 200)	= 118.11	
⑨	12.25 x (105 - 200)	= 118.11	
⑩	12.25 x (105 - 200)	= 118.11	
⑪	12.25 x (105 - 200)	= 118.11	
⑫	12.25 x (105 - 200)	= 118.11	
⑬	12.25 x (105 - 200)	= 118.11	
⑭	12.25 x (105 - 200)	= 118.11	
⑮	12.25 x (105 - 200)	= 118.11	
⑯	12.25 x (105 - 200)	= 118.11	
⑰	12.25 x (105 - 200)	= 118.11	
⑱	12.25 x (105 - 200)	= 118.11	
⑲	12.25 x (105 - 200)	= 118.11	
⑳	12.25 x (105 - 200)	= 118.11	
㉑	12.25 x (105 - 200)	= 118.11	
㉒	12.25 x (105 - 200)	= 118.11	
㉓	12.25 x (105 - 200)	= 118.11	
㉔	12.25 x (105 - 200)	= 118.11	
㉕	12.25 x (105 - 200)	= 118.11	
㉖	12.25 x (105 - 200)	= 118.11	
㉗	12.25 x (105 - 200)	= 118.11	
㉘	12.25 x (105 - 200)	= 118.11	
㉙	12.25 x (105 - 200)	= 118.11	
㉚	12.25 x (105 - 200)	= 118.11	
㉛	12.25 x (105 - 200)	= 118.11	
㉜	12.25 x (105 - 200)	= 118.11	
㉝	12.25 x (105 - 200)	= 118.11	
㉞	12.25 x (105 - 200)	= 118.11	
㉟	12.25 x (105 - 200)	= 118.11	
㊱	12.25 x (105 - 200)	= 118.11	
㊲	12.25 x (105 - 200)	= 118.11	
㊳	12.25 x (105 - 200)	= 118.11	
㊴	12.25 x (105 - 200)	= 118.11	
㊵	12.25 x (105 - 200)	= 118.11	
㊶	12.25 x (105 - 200)	= 118.11	
㊷	12.25 x (105 - 200)	= 118.11	
㊸	12.25 x (105 - 200)	= 118.11	
㊹	12.25 x (105 - 200)	= 118.11	
㊺	12.25 x (105 - 200)	= 118.11	
㊻	12.25 x (105 - 200)	= 118.11	
㊼	12.25 x (105 - 200)	= 118.11	
㊽	12.25 x (105 - 200)	= 118.11	
㊾	12.25 x (105 - 200)	= 118.11	
㊿	12.25 x (105 - 200)	= 118.11	



No. 18
 南厚平



12
 $0.123 \times (125 + 1191) = 172,115$
 $115 \times (120 + 121) = 27,635$
 $27,635 \div 2 = 13,817.5$
 $1127.12 \times 118 = 132,990.16$
 $1127.12 \times 119 = 134,127.28$
 $132,990.16 + 134,127.28 = 267,117.44$

布施市
 寿町

117
 $28.50 \times (126 + 1192) = 38,115$
 $18.10 \times (120 + 121) = 4,197$
 $4,197 \div 2 = 2,098.5$
 $38,115 + 2,098.5 = 40,213.5$
 $11.15 \times (120 + 121) = 2,661.75$
 $2,661.75 \div 2 = 1,330.875$
 $40,213.5 + 1,330.875 = 41,544.375$

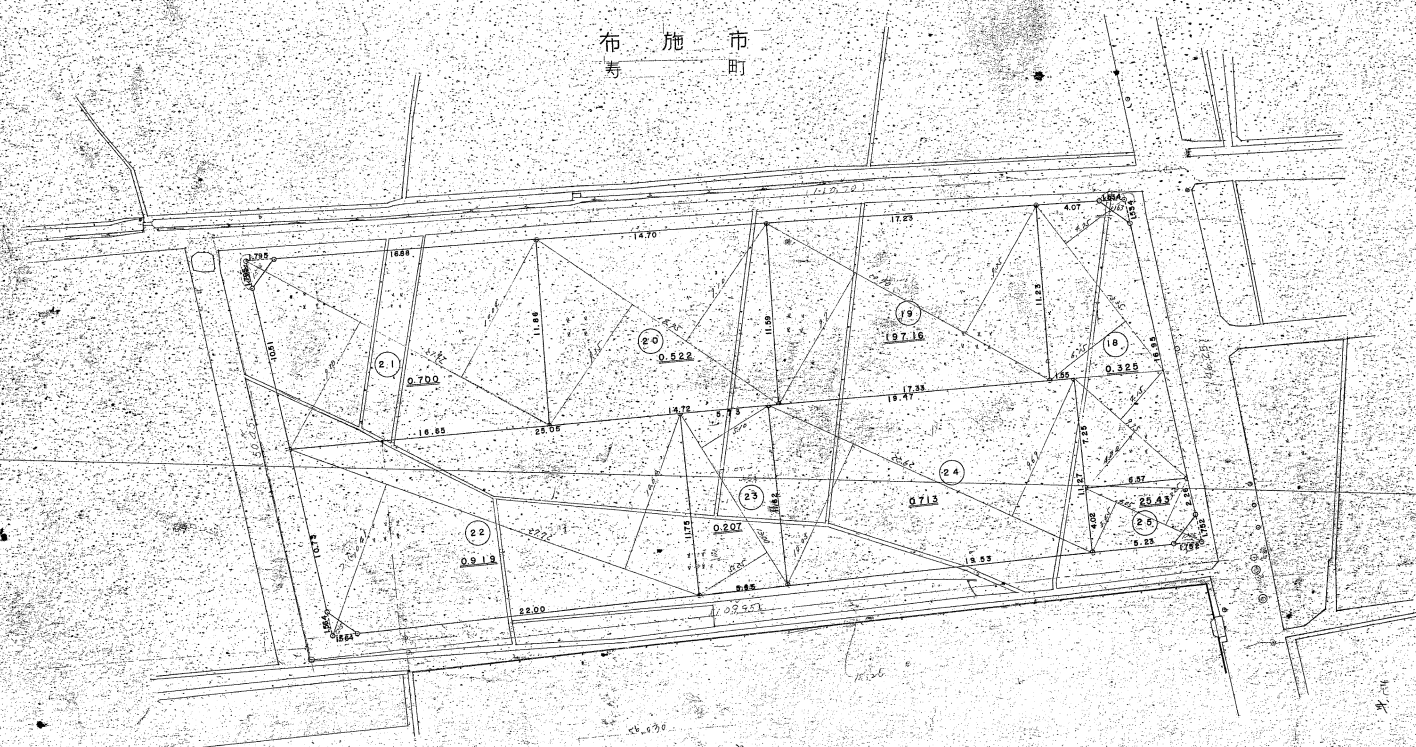


No 20

20

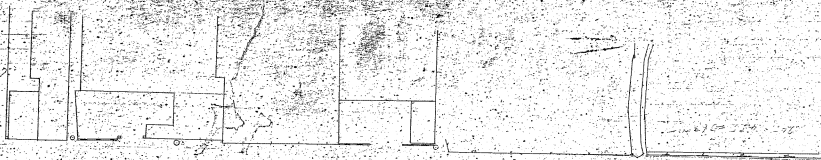
1. 2000 (100+100) 3	211.700	1.250	210.450
2. 2725 (1100+1625) 3	287.707	1.271	286.436
3. 18700 (300+18400) 3	173.442	1.173	172.269
4. 2000 (100+1900) 3	116.205	1.162	115.043
5. 2000 (100+1900) 3	223.057	1.223	221.834
6. 1700 (100+1600) 3	77.455	1.163	76.292
7. 2000 (100+1900) 3	49.200	1.163	48.037
8. 2000 (100+1900) 3	26.485	1.163	25.322
9. 1200 (100+1100) 3	67.275	1.125	66.150
10. 1200 (100+1100) 3	174.800	1.125	173.675
11. 1200 (100+1100) 3	189.349	1.125	188.224

布施市町
寿

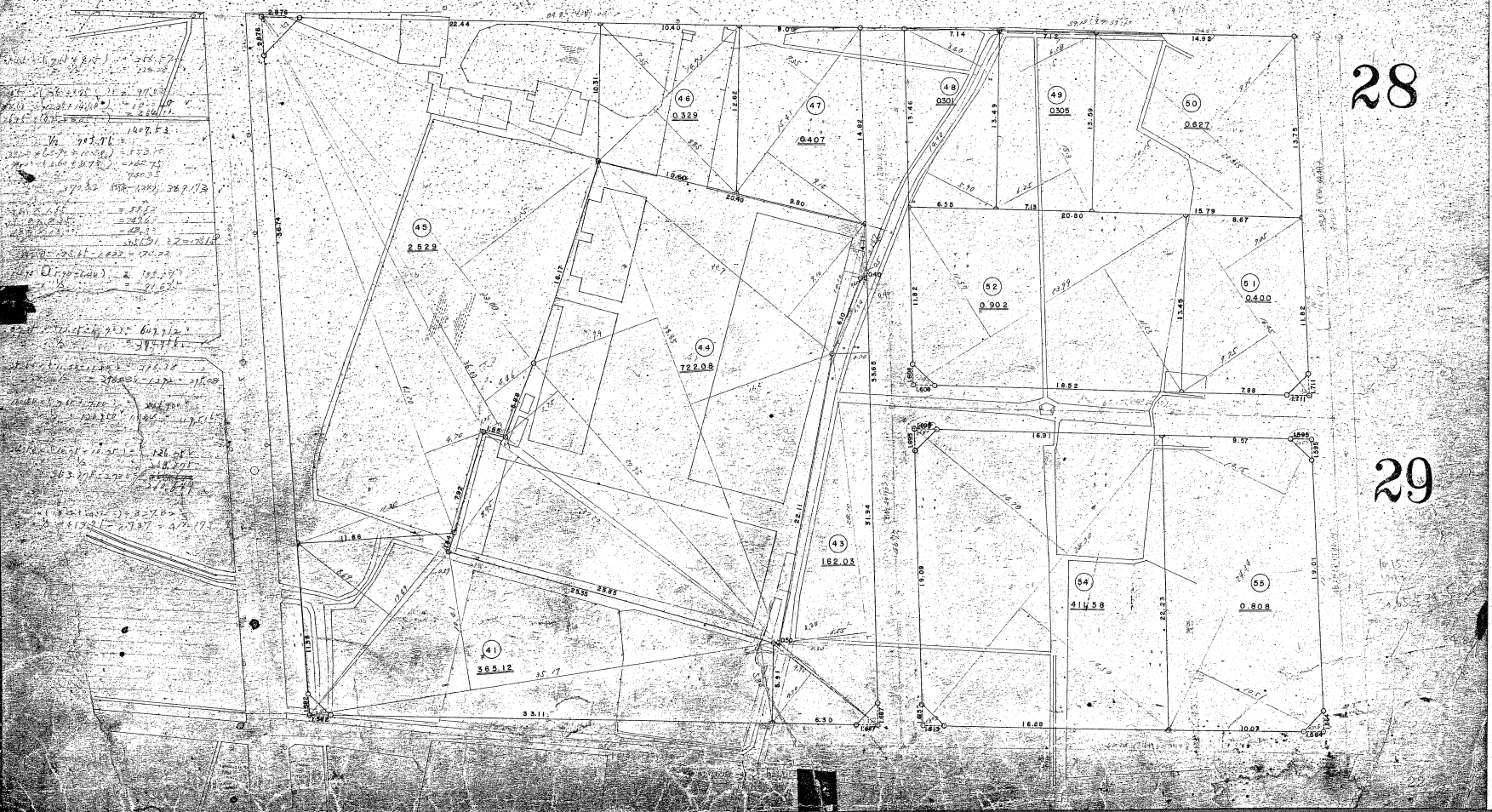


No 22

22
28
29



布施市
寿町



28

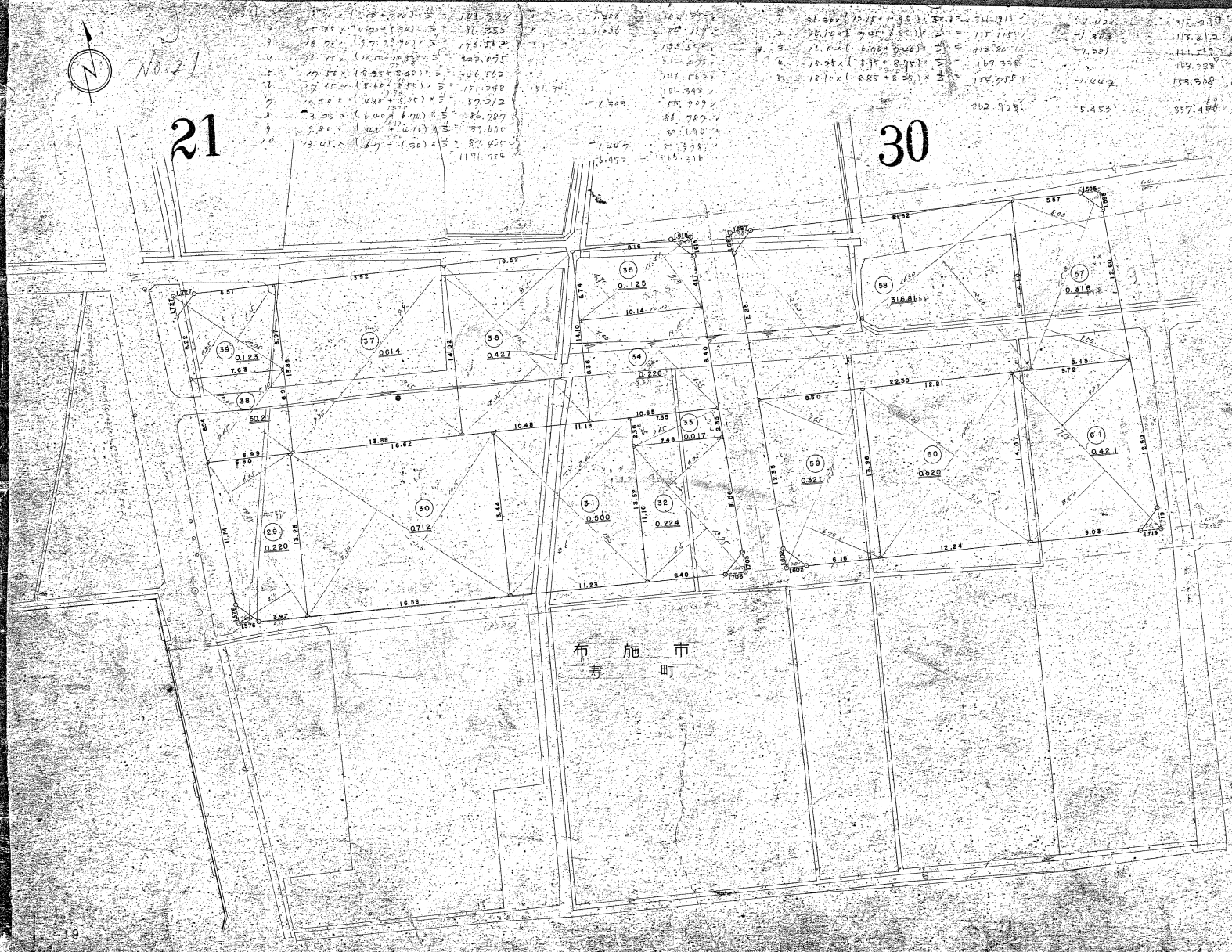
29



No. 21

21

30



布施市
寿町

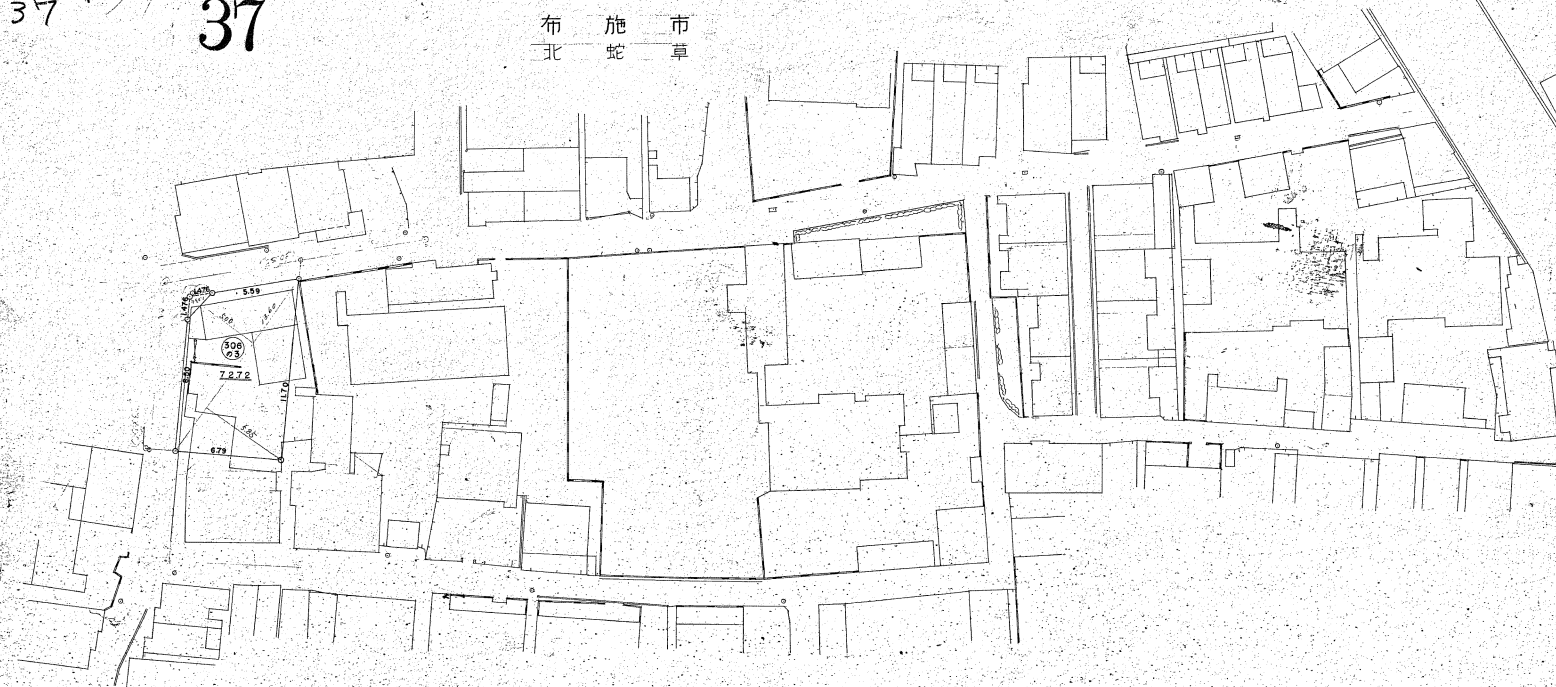


37

37

37

布施市
北蛇草





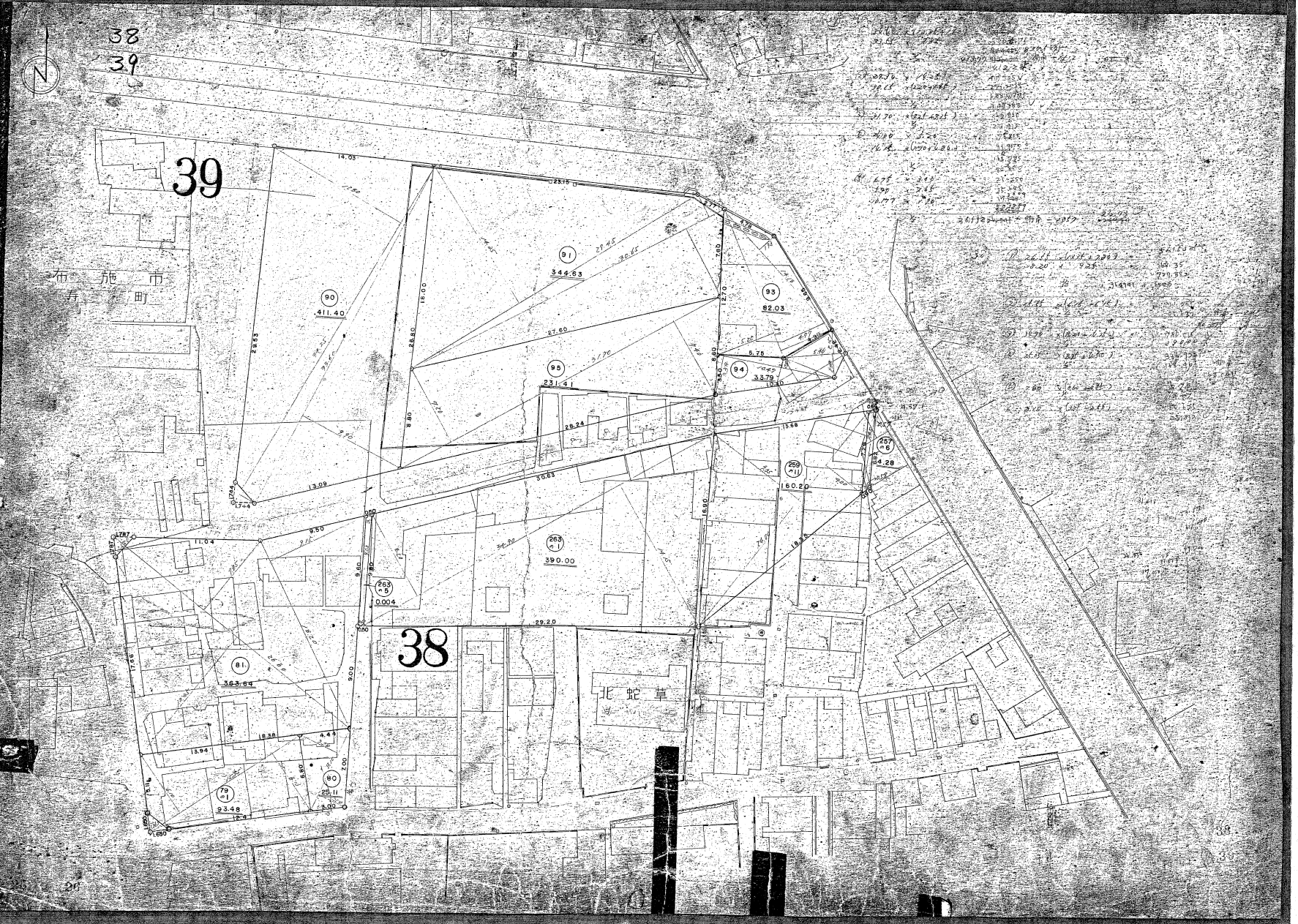
38
39

39

布 施 市
有 限 公 司

38

北 蛇 草



区画番号	面積 (㎡)	用途	備考
80	93.48	住宅	
81	363.84	住宅	
82	411.40	住宅	
83	344.83	住宅	
84	231.41	住宅	
85	82.03	住宅	
86	231.41	住宅	
87	231.41	住宅	
88	231.41	住宅	
89	231.41	住宅	
90	411.40	住宅	
91	344.83	住宅	
92	231.41	住宅	
93	82.03	住宅	
94	231.41	住宅	
95	82.03	住宅	
96	231.41	住宅	
97	231.41	住宅	
98	231.41	住宅	
99	231.41	住宅	
100	411.40	住宅	



26

26

① 941.166 2400(15.56+3.10) = 279.49 16.65 x 7.45 = 123.80 311.67 255.818	② 33.61 x (1000+106) = 350.76 375.48 - 1326 374.54	③ 20.66 (24.1125) = 498.48 214.240	④ 20.66 (24.1125) = 498.48 214.240	⑤ 16.65 (4.75) = 79.27 11.77 x 3.15 = 37.08 30.4 x (9.71+2.57) = 37.73 42.62 204.63	⑥ 20.66 (4.75+1.84) = 111.56 4.0 x (3.15+0.15) = 1.20 12.2 x 1.15 = 14.03 375.281 191.77
--	--	---------------------------------------	---------------------------------------	---	--

